

## North Yorkshire County Council

## Executive

4 February 2020

## School Admission Arrangements for the School Year 2021/22

## Report of the Corporate Director – Children and Young People's Service

<b>1.0</b>	<b>Purpose of Report</b>
<b>1.1</b>	<b>To seek views from Members on the response to the proposed admission arrangements for Community and Voluntary Controlled schools for the school year 2021/22 and to seek approval for recommendation to the County Council for determination.</b>

**2.0 Issues and Background**

**2.1** As the Admission Authority for all Community and Voluntary Controlled schools in North Yorkshire, the local authority consults annually on admission arrangements. The local authority is currently required to determine its admission arrangements, which includes admissions policy and admission limits, annually by 15 April each year. When changes are proposed to admission arrangements, all admission authorities must consult by 1 March. Where the admission arrangements have not changed from the previous year there is no requirement to consult, subject to the requirement that admission authorities' must consult on their admission arrangements at least once every 7 years, even if there have been no changes during that period.

**2.2** Consultation must last for a minimum of 6 weeks and take place between 1 October and 31 January in the determination year. This means that schools are consulted in the autumn term each year for admissions nearly two years later. The process is, therefore, based to some degree on schools' best estimates of the numbers of requests for places informed by the local authority's forecasting model, which takes into account the patterns of parental preference over the years. Since the Council is the only body that may determine the matter, it falls to the Council in February each year.

**2.3** The Education (Relevant Areas for Consultation on Admission Arrangements) Regulations 1999 (SI 1999 No. 124) require local authorities to determine relevant areas for consultation on admission arrangements. The relevant areas for schools maintained by North Yorkshire County Council are as follows:

For Community and Voluntary Controlled Schools, the relevant area for consultation is the entire County of North Yorkshire, plus the City of York and the area of Bradford Metropolitan Authority served at secondary level by South Craven School.

For Voluntary Aided, Foundation, Trust Schools and Academies the relevant area for consultation is North Yorkshire County Council and admission authorities within a radius of 3 miles of the school, including admission authorities in neighbouring local authority areas. It is proposed that relevant areas for consultation remain unchanged.

**2.4** It is proposed that catchment areas for all Community and Voluntary Controlled Schools in

North Yorkshire remain unchanged with the exception of changes consulted upon in respect of Admiral Long (Voluntary Controlled) Primary School, Burnt Yates and Ripley Endowed Church of England (Voluntary Controlled) Primary School, and also Malton School.

**2.5** Consultation has taken place with the headteachers and governors of 3 Nursery Schools, 305 Primary schools (102 Community, 92 Voluntary Controlled (VC), 27 Voluntary Aided (VA), 67 Converter Academy Schools, 14 Sponsored Academy schools, 2 Free Schools and 1 Foundation Trust). We also consulted 43 Secondary schools (16 are Community, 3 Voluntary Aided (VA), 16 Converter Academy Schools 7 Sponsored Academy Schools and 1 Free School), parents and other groups in the local area, the 13 neighbouring authorities and also with the relevant diocesan authorities. The consultation took place between 16 October and 06 December 2019 and was published on the NYCC website; all schools are asked to display a poster promoting the consultation and providing a link to the consultation and giving details of how to obtain a hard copy of the consultation documents. We also undertook a social media campaign with the aim of promoting the consultation more widely to raise awareness and give people an opportunity to engage.

**2.6** At the closing date of 6 December 2019 a total of 181 responses (all of which were from schools) had been submitted. The majority of responses were in respect of the published admission numbers (PAN) and with 7 responses relating to other parts of the consultation.

**2.6.1** A hard copy of all responses to the consultation will be available for Members to view on the morning of the meeting. Schools were asked to express their agreement or otherwise with the proposals relating to their own proposed Published Admission Number (PAN), the proposed admissions policy for Community and Voluntary Controlled schools, the proposed admissions policy for Nursery schools and classes, pre-reception classes and pre-schools under school governance and the proposed In-Year Fair Access Protocol. In addition, they had the opportunity to make any other comments. Not all school respondents commented on every proposal within the consultation.

**2.6.2** As in previous consultations we have again found that many consultees simply respond to the agree/disagree questions. In an effort to encourage greater interaction with the wider range of consultees all other respondents were asked to put forward comments on any aspect of the consultation. The Local Authority received no comments.

**2.7** There are three key areas to the consultation, details of which are set out below:

### **3.0 Admission Policy**

**3.1** Admissions policy (criteria for determining admissions where schools are oversubscribed):

The proposed admission policy for community and voluntary controlled schools, and the proposed policy for nursery schools and schools with nursery and pre-reception classes again remain broadly unchanged from 2020/21 arrangements, however it is proposed to include the addition of a priority group specifically for the children of staff who attend the school. Within this criteria priority will be given where a member of staff has been employed at the school for more than 2 years at the point the application is made. We will also give priority when a member of staff has been recruited to fill a demonstrable skill shortage.

**3.2** This change brings community and voluntary controlled schools in line with many other admission authorities who have already included this priority group with their admission

arrangements. We have placed the priority group specifically between children that live within the normal area of the school (catchment) and children that live outside of the normal area of the school (catchment) to ensure that no child that lives within the catchment area will be disadvantaged by the inclusion of the priority group.

### 3.3 Responses to the proposed Admission Policy for Community and Voluntary Controlled Schools.

The closing date of this consultation was 6 December 2019. A total of 182 schools responded. Three comments were received regarding the proposed policy.

Malton School	<p>I am writing to strongly support the proposed change to the Admissions Policy criteria to incorporate the inclusion of the children of staff as an allowable criteria for admission to a school. I am aware that this is an allowable national criteria for school admission and I am pleased that North Yorkshire are now looking to include it within their processes. In the 21<sup>st</sup> century I believe it is an important consideration to promote parents ability to return to work, or to increase hours of work, by having their child/ren able to attend the same school that they work at. I also think it is a good indication to other prospective parents and to the wider community (and to the local authority) to see that the staff of any school are happy that their own children attend that school.</p> <p>I would question the need to include a minimum 2 year period of employment. If that has been added to deal with temporary or fixed term contracts, I would suggest an alternative wording – simply that the criteria applies to the children of staff on an established or permanent contract. It doesn't seem right to distinguish between 2 children of 2 members of staff, both on permanent contracts, but one of whom was appointed only a term earlier than the other. Whilst this scenario might not happen very often it is a genuine possibility under your current proposed wording, whereas if the distinction is drawn on the type of contract rather than the length of service then that is something which all employees can understand and accept (even if they are not very happy about it).</p>
Lingfield Trust	<p>With regard to the above consultation for Admission Arrangements for 2021/2022, I would advise that Trustees have authorised me to reply as follows:</p> <ol style="list-style-type: none"> <li>a) Proposed Published Admissions Numbers for Cambrai Primary School – correct at 30 children to be admitted in Reception as we build to the target PAN of 210 places at the school. We do not envisage this admissions number changing before September 2021.</li> <li>b) Proposed Admission Arrangements for Community &amp; VC Schools – we agree with the proposal regarding the children of staff working at the school to become a priority group for a place at a school.</li> <li>c) Proposed changes to Local Admission arrangements and catchment areas at 3 schools (Admiral Long Primary School, Ripley Endowed Primary School &amp; Malton School) – Lingfield Education Trust has no comments to submit on these proposals.</li> </ol>
Ripon Grammar	<ol style="list-style-type: none"> <li>1. Published admission numbers – no comment</li> <li>2. Changes to admission arrangements – RGS would support new criteria for staff children to be given priority over out of catchment children. This is an important consideration for the recruitment and retention of staff in any school, but specifically for RGS, given its selective status and the level of competition</li> </ol>

	for out of catchment places. Further clarification would be useful on what is defined as a 'demonstrable skill shortage'- could any teacher, for example, who is appointed to a specialist teaching post be classified as a demonstrable skill shortage?
--	--

The above comments are noted. Officers consider it is correct to have a 2 year qualifying period. A definition of demonstrable skill shortage so that all are clear how this will operate in practice.

### 3.4 Responses to the proposed Admission Policy for Nursery Schools, Schools with Nursery and Pre-reception classes.

A total of 181 schools responded. No comments were received regarding the proposed policy.

## 4.0 Admission Limits

4.1 The proposed Published Admission Numbers (PAN's) for 2021/22 are attached at appendices 5 and 6. The County Council sets the admission limits of Community and Voluntary Controlled schools in consultation with the governing body of the school.

4.2 An own admission authority school (Voluntary Aided, Foundation, Trust Schools, Academies or Free Schools) is not required to include a proposal to increase or keep the same admission number in any consultation on admission arrangements. Conversely all admission authorities must consult if they propose a decrease in PAN. As the admission authority for a community or voluntary controlled school the local authority **must** consult the governing body of each school whether it proposes to increase, decrease or keep the same admission number. Community and Voluntary Controlled schools have the right to object to the Schools Adjudicator if the PAN set for them is lower than they would wish.

4.3 The Authority has consulted with the governing bodies of all community and voluntary controlled schools as part of this annual consultation process. There are 211 Community and Voluntary Controlled schools of which 98 agreed, 14 requested a PAN change and 99 schools didn't respond. Of the 14 requesting a change we have been able to agree 8 of them. Subsequent discussions have been held with those schools' whose requests we couldn't accommodate to explain the LAs position.

4.4. The local authority is responsible for school place planning across the whole of the county and must ensure that there are sufficient school places for every child of statutory school age. This means that schools cannot be considered in isolation and the wider impact of any reduction in admission numbers must be taken into consideration.

## 5.0 Co-ordinated Admission Arrangements

5.1 All admission authorities must participate in co-ordination and provide the local authority with the information it needs to co-ordinate admissions for the normal admission rounds by the dates agreed within the scheme. There is no longer a mandatory requirement that local authorities undertake in year co-ordination on behalf of all schools within their area and in liaison with their neighbouring LA's. This does not mean that local authorities cannot propose to continue to do so within their own local area. The Co-ordinated Admission Arrangements Scheme (Appendix 3) proposes the retention of in year co-ordination of admissions by the local authority. As the number of own admission authority school's increases parents may find it increasingly difficult to navigate a system which is fragmented in terms of numbers of admission authorities, proliferation of different admissions criteria and a lack of clarity about where accountability sits for securing their rights.

**5.2** It is proposed that within North Yorkshire the local authority will continue to co-ordinate in-year admissions for all community and voluntary controlled schools. In order for the scheme to operate effectively across all schools, including own admission authority schools, it is proposed that the local authority will also continue to co-ordinate in-year admissions on behalf of the governing bodies of own admission authority schools which elect to be party to the scheme. It is considered that as the admission authority for community and voluntary controlled schools the local authority should retain responsibility for in year co-ordination within these schools and in the interests of parents and children it is proposed to continue to deal with in year admissions for all own admission authority schools which request us to do so. If an academy trust would like the local authority to undertake this function on their behalf this can be managed as a chargeable service.

**5.2.1** The School Admissions Code states that 'local authorities must, on request, provide information to a parent about the places still available in all schools within its area. Any parent can apply for a place for their child at any time to any school outside the normal admission round.

**5.2.2** Own admission authority schools must, on receipt of an in-year application, notify the local authority of both the application and its outcome, to allow the local authority to keep up to date figures on the availability of places in the area.

**5.3** Of the 181 school respondents 3 schools made comment in respect of the proposed arrangements. No responses have been received from any of North Yorkshires neighbouring LA's.

### **6.0 IYFA – Protocol – Update**

**6.1** The authority changed the in-year Fair Access Protocol last year. We have now been able to implement this protocol for secondary schools and have developed Fair Access Panels which are working well and hard to place children are gaining access to appropriate provision in a more timely fashion.

**6.2** The protocol submitted for your consideration has been amended slightly to now include primary schools and we are working in the development of Fair Access Panels that will assist in the placement of hard to place primary school children in a similar way to secondary school pupils.

### **7.0 Selection Update – Changes to the Selective Testing Process**

**7.1** From September 2019 there was a change to the selection testing scheme operated by the Local Authority to determine eligibility for selective education at Ripon Grammar School and Ermysted's Grammar School changed. We reduced the testing process to one day which was largely welcomed. The subsequent reduction in time and staffing required to carry out the selection scheme will reduce our future costs.

**7.1.1** Further discussions took place with both selective schools which has resulted in Ermysted's Grammar School consulting on their own testing arrangements for September 2020. This will again further reduce the burden on the local authority in future years both administratively and financially.

### **8.0 Catchment Area changes**

**8.1** Admiral Long Church of England (Voluntary Controlled) Primary School, Burnt Yates and Ripley Endowed Church of England (Voluntary Controlled) Primary School.

**8.1.1** On the closure of Burnt Yates CE VA Primary School in August 2018, the school’s catchment area became a joint catchment area served by Bishop Thornton CE Primary School and Ripley Endowed Church of England Primary. This joint catchment area includes the villages of Burnt Yates, Clint and Bedlam.

Bishop Thornton CE Primary School transferred site to the former premises of Burnt Yates School from 1 September 2019. This followed consultation and statutory proposals published by the Governing Body of Bishop Thornton CE Primary School which were approved by the County Council’s Executive Member for Education and Skills on 25 June 2019. The school is now known as Admiral Long CE Primary School.

Now that the school has relocated from Bishop Thornton to Burnt Yates it seems an appropriate time to review the suitability of the current joint catchment area.

We propose to create separate catchment areas for Admiral Long CE Primary School and Ripley Endowed Church of England Primary School. The boundary between the two catchment areas will be redrawn to provide a more equitable division between the two schools.

The consultation drew no comments on the proposed change to catchment.

**8.2 Malton School**

**8.2.1** Following recent discussions, it has been identified that there are a number of North Yorkshire pupils that currently live in an area which is not served by a North Yorkshire school with an identifiable catchment area. It is essential that all North Yorkshire parents should have the ability to preference a North Yorkshire school. To eliminate any potential issues for North Yorkshire parents who currently live in the following parishes Barton-le-Willows, Flaxton, Harton, Claxton, Buttercrambe with Bossall, Sand Hutton, Warhill, Upper Helmsley and Gate Helmsley it is proposed that the current Malton School catchment area should be extended to address this anomaly. Within this proposal parents will be able to preference Malton School as their catchment School and continue to have Huntington School available as their joint catchment school.

Of the 181 school respondents 4 made comment in respect of the proposed arrangements. Responses have been received from York County Council, Huntington School, Norton School and Malton School.

Consultee	Response comments
Huntington School – Headteacher	<p>Malton Catchment Area Consultation</p> <p>I am writing in response to the Malton Catchment Area Consultation on behalf of Huntington School, York.</p> <p>There are several points to make in response to the proposal:</p> <ol style="list-style-type: none"> <li>1. There seems to be no logic as to why the proposed change needs to be made now, nor as why is it essential? The proposal merely states that, “It is essential that all North Yorkshire parents should have the ability to preference a North Yorkshire school.” We would argue that it is essential that the Year 6 children in the catchment area in question have access to an Outstanding school, which those Year 6 children currently do as they have a catchment-area right to attend Huntington School.</li> <li>2. Current Year 6 into Year 7 numbers for Malton School seem to be fine; the school’s repute is good and there seems to be no good reason we can establish as to why the school wants to expand its catchment area.</li> <li>3. Huntington has never had 240 Year 6 in its catchment in the 13 years I have been headteacher here. We have currently have 205 Year 6 pupils in our whole catchment, the most that I can remember. The future</li> </ol>

	<p>numbers suggest how we may struggle to fill our 240 places as the demographic bulge subsides and Year 6 numbers fall. Over the next few years we will return to around 160 Year 6 children for 240 places, our current PAN. Any reduction of our catchment can only make that shortfall worse.</p> <p>4. At the moment, we attract Year 6 pupils from outside our catchment area, but nothing guarantees that will continue into the future. If we don't suffer from losing Year 6 pupils to Malton's enlarged catchment, then there is a good chance that other schools in north York will suffer a diminution in their Year 7 numbers.</p> <p>5. This year we took 10 Year 6 children from the section of our catchment under review. Should we lose 10 Year 6 children because of the change in catchment, over five years that would be a loss of 50 students, which would damage our school significantly and would lead to us having to make staff redundancies.</p> <p>6. In York we have a clear understanding between schools that we do not compete for Year 6 pupils by going into primary schools before the 31 October deadline and speaking to pupils and parents. We respect catchment area boundaries. I understand that the Malton head teacher, someone I have known and got on with very well for many years, does visit primary schools for recruitment purposes; I would feel deeply uncomfortable if I felt obliged to make similar visits to the primary schools within the proposed extension to Malton's catchment. I hope you understand our concerns. I look forward to hearing the outcome of the Malton Catchment Area Consultation, and hope that the proposal is rejected.</p>
<p>Malton School – Governing Body</p>	<p>Consultation Response over Proposed Extension to Malton School Catchment Area</p> <p>Malton School welcomes this proposal and fully supports it for the following reasons:</p> <ol style="list-style-type: none"> <li>1. It enshrines the principle that every North Yorkshire child / family should be able to preference their nearest North Yorkshire school and receive statutory transport provision to that school if they are successfully placed there through the admissions procedure.</li> <li>2. In enshrining this principle it addresses the anomaly that has remained in place since the creation of the City of York as a unitary authority in 1996, that this one area of North Yorkshire was left uncovered by the principle outlined in the proposal and in point 1 above.</li> <li>3. Since 1996 the funding of maintained schools has changed dramatically such that Malton School has been left with a catchment area that is too small for a secondary school in the current climate, and this change goes some way towards addressing the need of the school to attract students in from outside of its normal catchment.</li> <li>4. The proposal has no detriment to any other secondary school within the authority, and arguably none to Huntington School in York which will remain on an equal footing with Malton School in that the parents in this area could still preference Huntington and receive statutory transport provision.</li> <li>5. The North Yorkshire Primary Schools of Sand Hutton and Warthill will have the advantage that their students who live within this designated area will be able to preference Malton School or Huntington School on an equal footing.</li> </ol> <p>This response has been submitted on behalf of the Governing Body of Malton School who are aware of and supportive of the proposal from North Yorkshire County Council.</p>
<p>Norton College – Business</p>	<p>In response to the above proposed changes we give you our views on the proposal as follows:</p>

Manager	<p>1) We support the principle of North Yorkshire parents being able to preference a North Yorkshire Secondary School;</p> <p>2) We do not support the proposed extension of the Malton School catchment area as currently suggested, and would offer the following alternative proposal:</p> <p>That the proposed area with a joint catchment to Malton or Huntington Schools (area in green on the final map) should be split, as appropriate, between Malton School and Norton College. This would not only support the principle and the rationale behind the proposed change but give further choice to North Yorkshire parents.</p> <p>Additionally we are aware that Malton School is likely to reach pupil number capacity very soon. This proposal would ensure, certainly in the short to medium term, that surplus places at Norton College are more likely to be taken up (current capacity is 1061 pupils, current number on roll is 791). The Norton College intake in September 2019 was the lowest in 5 years and this does not correlate with previous predictions that NYCC school place planners have made - this has been the situation for a number of years. We therefore challenge data relating to future periods that forecasts secondary school demand for individual schools. Furthermore by sharing the catchment area, the likely spend, using public monies may be avoided, possibly in the short to medium term by not having to consider the increase in PAN and subsequent accommodation needs of one of the two schools in close proximity to each other (Malton and Norton).</p> <p>We would urge you to re-consider the proposals that have been made.</p>
York City Council – School Admissions Manager	<p>With regards to the proposal of North Yorkshire County Council to extend the Malton School Catchment Area to include the parishes Barton-le-Willows, Flaxton, Harton, Claxton, Buttercrambe with Bossall, Sand Hutton, Warthill, Upper Helmsley and Gate Helmsley and so mirror the county boundary.</p> <p>We recognise the authorities opportunity to review their catchment arrangements for North Yorkshire County Council residents and the change will allow residents the choice of schools, Huntington School which currently serves the area as part of their longstanding catchment area and the closest school geographically in many cases or Malton School, a North Yorkshire County Council school.</p> <p>We acknowledge the concerns raised by the Headteacher at Huntington School and the implications of the proposed changes.</p> <p>We are encouraged that the area in question will have a dual catchment area allowing residents the choice to continue to attend Huntington School and that North Yorkshire County Council will continue to apply their home to school transport policy for children in the area wishing to attend Huntington School.</p>

Although we understand the comments received from some of the above respondents, the officers' view remains that this is the appropriate action required to address this situation for parents living in the area.

## 9.0 General Comments

- 9.1 All schools were given the opportunity to submit any general comments in relation to the consultation, the majority of schools did not do so. As noted above a hard copy of all responses which will be available for Members to view on the morning of the meeting.



## 10.0 Legal Implications

10.1 The consultation on proposed admissions arrangements for 2021/22 is in accordance with the requirements of the School Admissions Code 2014 and associated legislation. Failure to comply with admission arrangements as determined can lead to challenge by way of objections to the Schools Adjudicator or complaints to the Local Government Ombudsman.

## 11.0 Recommendations

11.1 That the proposed Admission Arrangements be recommended to the County Council for approval on 19 February 2020 these include:

- i) the proposed admission policy for community and voluntary controlled schools; and
- ii) the proposed admission policy for nursery schools, schools with nursery classes and pre-reception classes, appendices 1 & 2.
- the proposed co-ordinated admission arrangements appendix 3
- the proposed In-Year Fair Access Protocol appendix 4
- the proposed published admission numbers (PAN's) for community and voluntary controlled schools as shown in appendices 5 (Primary) and 6 (Secondary)
- catchment area Admiral Long CE Voluntary Controlled Primary School and Ripley Endowed CE Voluntary Controlled School appendix 7
- catchment area Malton School appendix 8

Stuart Carlton  
Corporate Director – Children and Young People's Service

COUNTY HALL  
NORTHALLERTON  
January 2020

Author of report – William Burchill Admissions and Transport Manager

School Admissions Code 2014

The Education (Relevant Areas for Consultation on Admission Arrangements) Regulations 1999 (SI 1999 No. 124)

Appendix 1 - proposed admission policy for community and voluntary controlled schools

Appendix 2 - proposed admission policy for nursery schools, schools with nursery classes, pre-reception classes and school run pre-schools under school governance

Appendix 3 - proposed co-ordinated admission arrangements scheme

Appendix 4 - proposed In-Year Fair Access Protocol

Appendix 5 - proposed PAN's – primary

Appendix 6 - proposed PAN's – secondary

Appendix 7 – proposed catchment area change Admiral Long Church of England (Voluntary Controlled) Primary School

Appendix 8 - proposed catchment area change Malton School

## ADMISSIONS POLICY FOR COMMUNITY AND VOLUNTARY CONTROLLED SCHOOLS FOR THE SCHOOL YEAR 2021/22

All governing bodies are required by section 324 of the Education Act 1996 to admit to the school a child with an Educational Health and Care Plan (EHCP) that names the school. This is not an oversubscription criterion. This relates only to children who have undergone statutory assessment and for whom a final Educational Health and Care Plan has been issued.

If the number of applications exceeds the Published Admission Number (PAN), after the admission of children where the school is named in the Education Health and Care Plan the following oversubscription criteria will apply:

<b>ORDER OF PRIORITY:</b>	<b>Notes:</b>
<p><b><u>Priority Group 1:</u></b></p> <p>Looked after children and all previously looked after children for whom the school has been expressed as a preference. Previously looked after children are children who were looked after, but ceased to be so because they were adopted<sup>1</sup> or became subject to a child arrangement order<sup>2</sup> or special guardianship order.</p>	<p><i>This applies to all looked-after children, including those who are in the care of another local authority or being provided with accommodation by a local authority in the exercise of their social services function at the time of making an application.</i></p> <p><i>In the case of previously looked after children, a copy of the relevant documentation will be required in support of the application.</i></p> <p><sup>1</sup><i>This includes children who were adopted under the Adoption Act 1976 and Children who were adopted under the Adopted &amp; Childrens Act 2002.</i></p> <p><sup>2</sup><i>Child Arrangement Orders replace residence orders and any residence order in force prior to 22 April 2014 is deemed to be a Child Arrangement Order.</i></p>
<p><b><u>Priority Group 2 :</u></b></p> <p>Children who appear to the Admissions Authority to have been in state care outside of England and cease to be in state care as a result of being adopted.</p>	<p><i>A child is regarded as being in state care outside of England if they were accommodated by a public authority, a religious organisation or any another provider of care whose sole purpose is to benefit society.</i></p>
<p><b><u>Priority Group 3:</u></b></p> <p>Children the Authority considers have special social or medical reasons for admission.</p>	<p><i>We will only consider applications on social or medical grounds if they are supported by a professional recommendation from a doctor, social worker, or other appropriate professional. The supporting evidence should set out the particular social or medical reason(s) why the school in question is the most suitable school and the difficulties that would be caused if the child had to attend another school.</i></p> <p><i>Panels of professionally qualified people will consider all applications made under priority group 2.</i></p>
<p><b><u>Priority Group 4 :</u></b></p> <p>Children living within the normal area of the school.</p>	<p><i>Refer to tie break</i></p>
<p><b><u>Priority Group 5:</u></b></p> <p>Children of staff at the school.</p>	<p><i>Priority in this oversubscription criteria is given in either or both of the following circumstances:</i></p> <ul style="list-style-type: none"> <li><i>a) Where a member of staff has been employed at the school for more than two years at the time when the admission to the school is made,</i></li> <li><i>and/or</i></li> <li><i>b) the member of staff has been recruited to fill a demonstrable skill shortage.</i></li> </ul>
<p><b><u>Priority Group 6:</u></b></p> <p>Children living outside the normal area of the school.</p>	<p><i>Refer to tie break</i></p>

*Children in higher numbered priority groups will be offered places ahead of those in lower numbered priority groups. All applications within each priority group will be considered equally ( i.e. all applications, regardless*

of order of preference).

*Tie break:*

*If there are not enough places for all the children in one of these priority groups, we will give priority first to those with a sibling at the school in September 2021 ( in all cases sibling refers to brother or sister, half brother or sister, adopted brother or sister, step brother or sister, or the child of the parent / carer's partner where the child for whom the school place is sought is living in the same family unit at the same address as that sibling ) and then to those living nearest the school.*

*If within a priority group there are not enough places for all those with a sibling at the school in September 2020, we will give priority to those children with a sibling living nearest the school.*

*All distance measurements are based on the nearest route recognised by the County Councils electronic mapping system from a child's home address to school. The measurement is made from a fixed point within the dwelling, as identified by Ordnance Survey, to the nearest school entrance using footpaths and roads. The routes measured to determine the allocation of school places will be those recognised by the electronic mapping system used by the school admissions team.*

If the distance tie-break is not sufficient to distinguish between applicants in a particular priority group a random allocation will be used.

### **RANDOM ALLOCATION PROCEDURE**

Random allocations are necessary where:

1. There is more than one applicant ranked equally according to the published admission rules and there are insufficient places available to allocate all of the equally ranked applicants
2. This occurs where applicants are equidistant from a school because the usual method of measuring distance to the school results in two unrelated applicants having the same distance measurement. Each random allocation event only holds for the allocation of the currently available school place. On any waiting list the remaining applicants remain equally ranked and any further place is offered as the result of a further random exercise. In making a random allocation it is important that there is scrutiny from a person who is not involved in the allocation process.

### **DEFINITION OF ROLES**

Independent Scrutineer (IS) – this is a person who ensures the process is carried out in a correct and transparent way. The IS must be independent of the school for which the allocation is to be made and also must be independent of the Council's Admissions and Transport team.

Admissions Officer (AO) – this is an officer from the Council's Admissions and Transport team who is responsible for carrying out the administration of the random allocation procedure and recording the results, under the scrutiny of the IS.

Person who makes the draw (P) – this must be a person independent of the school for which the allocation is to be made and must be a person who is not part of the Council's Admissions and Transport team.

### **PROCESS TO BE FOLLOWED – N.B. This entire process is to be carried out in sight of, and under the scrutiny of, the IS**

1. The AO allocates each pupil to be included in the draw a number and records it on the 'Random Allocation Cross Reference Sheet'. This is placed in a sealed envelope.
2. The AO prepares as many equal sized pieces of white paper as are necessary, which are numbered consecutively.
3. The AO folds each numbered sheet and seals them in identical envelopes, i.e. envelopes with no visibly identifiable differences.
4. The AO shuffles the envelopes and hands them to P who shuffles the envelopes again, picks one envelope and opens it.
5. The AO records the first number drawn on the 'Random Allocation Record sheet'.
6. If more than one place can be offered they continue to draw envelopes and record numbers until all of the available places are allocated.
7. The AO then opens the previously sealed envelope containing the 'Random Allocation cross reference sheet' and records the numbers drawn on the 'Random Allocation cross reference sheet', marking clearly which child(ren) has(have) been allocated a place and which have not.
8. Once the process has been completed, the AO, IS and P should sign and date both the 'Random Allocation Record sheet' and the 'Random Allocation cross reference sheet' in order to certify that the procedure has been carried out correctly.

*We may be able to meet your preference for a place at a school that does not serve the local area you live in. In this case, you will normally be responsible for travel arrangements and the costs of your child's travel to and from school.*

#### **LOCAL ARRANGEMENTS:**

**Scarborough area** - Graham School - For priority group 4 applications (that is, children living within the normal area covering the school), priority will be given as follows:

- a) Children living in the area normally served by East Ayton Community Primary School and the area west of Scalby Road from Lady Edith's Drive to Scalby Beck.
- b) Children who will have an older sibling at the school of their choice.
- c) Children who live nearest to the school of their choice.

Scalby School - For priority group 4 applications (that is, children living outside the normal area of the school), priority will be given to children who live in the areas normally served by East Ayton Community Primary School and the area west of Scalby Road from Lady Edith's Drive to Scalby Beck and who:

- a) will have an older sibling at Scalby School at the start of the term when the younger sibling starts school;  
or
- b) would have to make the longest journey to another school without them becoming eligible for help with travel costs from us under the local authority transport policy.

**Selby area** - Brayton Academy and Selby High School – For the purposes of admissions for priority group 4 children a distinction is drawn between those who live in Selby rural area and Selby town area. Each school, Brayton Academy and Selby High, has its own designated rural area and the two schools are jointly the normal schools for the Selby town area. Places will be offered, within priority group 4, to children from the individual rural area associated with each school before those in the town area, using the tie break elements of the Admissions policy for community and voluntary controlled schools for the school year 2021/22 where necessary.

**Ripon Grammar School** - Ripon Grammar School is a designated grammar school,<sup>1</sup> this means that the school is permitted to select its entire intake on the basis of high academic ability<sup>2</sup>. The school does not have to fill all of its places if applicants have not reached the required standard. Ripon Grammar School offers 103 day places and 14 boarding places.

As a maintained boarding school Ripon Grammar School may take boarders as well as day pupils. Maintained boarding schools can set separate admission numbers for day places and boarding places. A maintained boarding school can interview applicants to assess suitability for boarding, but such interviews **must** only consider whether a child presents a serious health and safety hazard to other boarders or whether they would be able to cope with and benefit from a boarding environment. To help with this assessment, they may also use a supplementary information form, and information provided by the previous school and by the child's home local authority (on safeguarding issues).

Boarding schools **must** give priority in their oversubscription criteria in the following order:

- a. looked after children and previously looked after children;
- b. children of members of the UK Armed Forces who qualify for Ministry of Defence financial assistance with the cost of boarding school fees;
- c. children with a 'boarding need', defined by Ripon Grammar School as follows:
  - i. Children at risk or with an unstable home environment and children of service personnel who have died while serving or who have been discharged as a result of attributable injury; or
  - ii. Children of key workers and Crown Servants working abroad, e.g. the children of charity

---

<sup>1</sup> As designated by the Education (Grammar School Designation) Order 1998 (SI 1998/2219). Where a designated Grammar School converts to become an Academy, the Academy is permitted to continue selecting their entire intake: Section 6(3) of the Academies Act 2010.

<sup>2</sup> Section 104 of the School Standards and Framework Act

workers, people working for voluntary service organisations, the diplomatic service or the European Union, teachers, law enforcement officers and medical staff working abroad whose work dictates that they spend much of the year overseas.

### **DEFERRED APPLICATIONS FOR INFANTS**

Admission authorities **must** provide for the admission of all children in the September following their fourth birthday.

Parents offered a place in reception for their child have a right to defer the date their child is admitted, or to take the place up part-time, until the child reaches compulsory school age. Places cannot be deferred beyond the beginning of the final term of the school year for which the offer was made.

Children reach compulsory school age on the prescribed day following their 5th birthday (or on their fifth birthday if it falls on a prescribed day). The prescribed days are 31 August, 31 December and 31 March.

### **SUMMER BORN CHILDREN**

Children born in the summer term are not required to start school until a full year after the point at which they could first have been admitted – the point at which other children in their age range are beginning year 1. As noted above, school admission authorities are required to provide for the admission of all children in the September following their fourth birthday, but flexibilities exist for children whose parents do not feel they are ready to begin school at this point.

If you feel that your summer born child is not ready to start school in the September following his/her fourth birthday, you should still submit your application for your child's normal age group at the usual time and at the same time submit a request for admission out of the normal age group directly to the local authority. You will be advised of the outcome of your request for delayed entry prior to the primary national offer date of 16 April 2021.

The DfE has issued non-statutory guidance, "Advice on the Admission of summer born children", which can be accessed via <https://www.gov.uk/government/publications/summer-born-children-admission>

The DfE guidance states that:

- 'It is reasonable for admission authorities to expect parents to provide them with information in support of their request – since without it they are unlikely to be able to make a decision on the basis of the circumstances of the case. This should demonstrate why it would be in the child's interests to be admitted to reception rather than year one.'
- 'In some cases parents may have professional evidence that it would be appropriate for them to submit, for example, when a child receives support from a speech and language therapist. However, there should be no expectation that parents will obtain professional evidence that they do not already have. Admission authorities must still consider requests that are not accompanied by professional evidence. In such cases the supporting information might simply be the parent's statement as to why they have made their request.'

If your request is agreed, your application for the normal age group may be withdrawn before a place is offered. If your request is refused, you must decide whether to accept the offer of a place for the normal age group, or to refuse it and make an in year application for admission to year one for the September following your child's fifth birthday.

Where your request is agreed, you must make a new application as part of the main admissions round the following year.

### **ADMISSION OF CHILDREN OUTSIDE THEIR NORMAL AGE GROUP**

The School Admission Code states that 'Parents may seek a place for their child outside of their normal age group, for example, if the child is gifted and talented or has experienced problems such as ill health. In addition, the parents of a summer born child may choose not to send that child to school until the September following their fifth birthday and may request that they are admitted out of their normal age group – to reception rather than year 1.'

When such a request is made, the local authority will make a decision on the basis of the circumstances of the case and in the best interests of the child concerned, taking into account the views of the headteacher and any supporting evidence provided by the parent. This will include taking account of the parent's views; information about the child's academic, social and emotional development; where relevant, their medical history and the views of a medical professional; whether they have previously been educated out of their

normal age group; and whether they may naturally have fallen into a lower age group if it were not for being born prematurely. The local authority will notify parents in writing of the outcome of their request setting out the reasons for their decision. Parents have a statutory right to appeal against the refusal of a place at a school for which they have applied. This right does not apply if they are offered a place at the school but it is not in their preferred age group.

DRAFT

**ADMISSIONS POLICY FOR COMMUNITY AND VOLUNTARY CONTROLLED  
NURSERY SCHOOLS, NURSERY CLASSES, PRE-RECEPTION CLASSES AND SCHOOL  
RUN PRE SCHOOLS UNDER SCHOOL GOVERNANCE  
FOR THE SCHOOL YEAR 2021/22**

All governing bodies are required to admit to the school a child with an Educational Health & Care Plan (EHCP) that names the school. This is not an oversubscription criterion. This relates only to children who have undergone statutory assessment and for whom a final Education Health & Care Plan has been issued.

Where the number of applications exceeds the number of places the Governing Body will use the following oversubscription criteria to prioritise applications.

<b>ORDER OF PRIORITY:</b>	<i>Notes</i>
<p><b><u>First Priority</u></b></p> <p>Looked after children and all previously looked after children for whom the school has been expressed as a preference. Previously looked after children are children who were looked after, but ceased to be so because they were adopted<sup>1</sup> or became subject to a child arrangement order<sup>2</sup> or special guardianship order.</p>	<p><i>This applies to all looked-after children, including those who are in the care of another local authority or being provided with accommodation by a local authority in the exercise of their social services function at the time of making an application.</i></p> <p><i>In the case of previously looked after children, a copy of the relevant documentation will be required in support of the application.</i></p> <p><i><sup>1</sup>This includes children who were adopted under the Adoption Act 1976 and Children who were adopted under the Adopted &amp; Childrens Act 2002.</i></p> <p><i><sup>2</sup>Child Arrangement Orders replace residence orders and any residence order in force prior to 22 April 2014 is deemed to be a Child Arrangement Order.</i></p>
<p><b><u>Second Priority</u></b></p> <p>Children who appear to the Admissions Authority to have been in state care outside of England and cease to be in state care as a result of being adopted.</p>	<p><i>A child is regarded as being in state care outside of England if they were accommodated by a public authority, a religious organisation or any another provider of care whose sole purpose is to benefit society.</i></p>
<p><b><u>Third Priority</u></b></p> <p>Children who are recommended by the Director of Children and Young Peoples Service, including children in the care of a local authority, or by the appropriate designated medical officer.</p>	<p><i>Note: we will only consider applications in this category if they are supported by a recommendation from a doctor, social worker or other appropriate professional which sets out the particular reason(s) why the school in question is the most suitable school and the difficulties that would be caused if the child had to attend another school.</i></p>
<p><b><u>Fourth Priority</u></b></p> <p>Children from homes with poor housing conditions or overcrowding, or from a background which could affect the child's normal educational development.</p>	<p><i>Note: this should be supported by the recommendation of a doctor, social worker or other appropriate professional.</i></p>
<p><b><u>Fifth Priority</u></b></p> <p>Children within the normal area of the school, giving priority to the oldest children first.</p>	
<p><b><u>Sixth Priority</u></b></p> <p>Children from outside the school's normal area, giving priority to those whose home is nearest to school first.</p>	



**North Yorkshire**  
County Council

**2021/22  
CO-ORDINATED ADMISSION  
ARRANGEMENTS**



## Introduction

The aim of the North Yorkshire Coordinated Primary and Secondary School Admissions Scheme is to provide an open and fair way for considering parental preferences for admission to schools. Our scheme complies with current legislation relating to school admissions and with advice contained in the Department for Education 2014 School Admissions Code.

The scheme is reviewed annually and is designed to ensure that every child living in North Yorkshire, who is due to start at a North Yorkshire primary school, or transfer to junior or secondary school, is offered a single school place on the same day. It aims to ensure that each parental preference is considered equally and parents receive a school place in accordance with their highest ranked preference which is available. This scheme applies to admissions in the normal round but not those that take place in-year. In-year admissions are those made during the school year and applications for admission to age groups other than the normal year of entry.

North Yorkshire Local Authority (LA) will work with Community, Voluntary Controlled, Voluntary Aided, Foundation, Trust primary and secondary schools and Academies including Free Schools within North Yorkshire, to ensure the co-ordinated scheme operates as smoothly as possible for parents and we will work closely with our thirteen neighbouring authorities to ensure admission arrangements are co-ordinated. Our 13 neighbouring admission authorities, Voluntary Aided, Foundation, Trust schools and Academies are listed at Appendix 3 and Appendix 4.

After consideration of all parental preferences for all schools with reference to the order in which these are ranked, the LA will notify parents living within North Yorkshire of the offer of one school place on behalf of all admission authorities operating within the co-ordinated admissions scheme.

The detailed arrangements and timetable for co-ordinating school admission with the separate arrangements for secondary and primary schools can be found at Appendices 1 and 2.

Arrangements for In Year admissions can be found at page 24 of this co-ordination document. This document is also available on our website at [www.northyorks.gov.uk/admissions](http://www.northyorks.gov.uk/admissions)

The website includes information about:

- The operation of our admissions schemes for all North Yorkshire Community and Voluntary Controlled schools;
- The timescales and timetables for each admission process;
- The number of allocations made at each school in the previous school year;
- The number of schools that were oversubscribed resulting in parental appeals and the numbers and outcome of these appeals. This information about allocations and appeals should help parents to assess realistically their likelihood of obtaining a place at their preferred schools.

## Co-ordination

1. The scheme does not affect the duty of the governing bodies of Academies including Free Schools, Voluntary Aided, Foundation and Trust schools to determine their own admissions policies.
2. We will receive information of children expressing preferences for our Community, Voluntary Controlled, Voluntary Aided, Foundation and Trust Schools and Academies including Free Schools from neighbouring LAs, which we will process as part of our co-ordinated arrangements along with those for North Yorkshire children.
3. Parents requesting literature on Voluntary Aided, Foundation, Trust schools or Academies including Free Schools or non-North Yorkshire schools will be referred to the appropriate school or admissions authority. Where non-North Yorkshire parents complete our form in error we will forward it to their home authority.
4. We will receive complete ranked lists of all preferences from North Yorkshire Voluntary Aided, Foundation, Trust schools and Academies including Free Schools as well as lists from neighbouring Local Authorities of children to whom they can offer places. We will produce lists of children to whom we can offer places at our Community and Voluntary Controlled Schools. We will inform our neighbouring LAs which of their children can and cannot be offered places at any of our schools.
5. Having received information from other admissions authorities we will allocate places to children living in our area according to the highest ranked preference for which a place is available.
6. Where we cannot meet any of the parental preferences expressed for a North Yorkshire child we will allocate a place at an alternative school with places available after all those preferencing the school have first been allocated a place. This may or may not be the local school and may be some distance from their home.
7. Supplementary Information Forms may need to be completed by parents applying for Voluntary Aided primary or secondary schools or Academies including Free Schools.

## Admissions Co-ordination 2021/22

The number of schools as at October 2019

### **Secondary**

North Yorkshire's co-ordinated admissions scheme applies to 3 Voluntary Aided Secondary Schools, 16 Community Secondary schools, 23 Academies, and 1 Free School UTC

### **Primary**

1 Foundation Primary, 80 Academy, 27 Voluntary Aided Primary Schools, 195 Voluntary Controlled and Community Primary Schools and 2 Free Schools.

We co-ordinate with 4 Diocesan Authorities and 13 Neighbouring Authorities.

**On line applications for school places can be made by logging on to our website at [www.northyorks.gov.uk/primaryadmissions](http://www.northyorks.gov.uk/primaryadmissions) or [www.northyorks.gov.uk/secondaryadmissions](http://www.northyorks.gov.uk/secondaryadmissions).**

## Applying for a Primary, Infant, Junior or Secondary School Place

8. Parents can list up to 5 schools in order of preference. Parents should consider including their local school as one of their preferences because if we are unable to meet a higher preference and their normal area school is oversubscribed, we will give children a place at the catchment or nearest school with places available which may be some distance from their home.
9. If parents name a school other than their catchment area school, they will be responsible for transport under the terms of the Home to School Transport Policy.

## Late Applications

10. Any Common Application Form for school places received after the closing date of 31 October 2020 for secondary schools and 15 January 2021 for primary schools will be considered as a late application unless a reason has been provided that is acceptable to us as the admission authority. Late applications whose reasons have been agreed will be considered along with applications received on time.
11. Applications received on or after 1 March 2021 for secondary schools or 16 April 2021 for primary schools will be co-ordinated using the same arrangements and criteria as previous applications. The offer of a school place will be made in accordance with our agreed and published scheme. However applications received after the first day of the school year will be considered as in-year applications.
12. No changes can be made to applications for secondary schools after the 21 December 2020 and to primary applications after 19 February 2021. This includes any changes of address. Any applications received after these dates will only be processed after the allocations dates of 1 March 2021 for secondary applications and 16 April 2021 for primary applications.

## The Offer of a Place

13. No places will be held in reserve for any school.
14. We will contact all parents of North Yorkshire children on 1 March 2021 for Secondary Schools and on the 16 April 2021 for Primary, Infant and Junior Schools, notifying them of the single school place allocated to their child or children.
15. The place offered could be at one of our Community or Voluntary Controlled schools, Voluntary Aided, Foundation, Trust schools or Academies including Free Schools within North Yorkshire or a school in an area served by another LA.

## Appeals

16. Where we have been unable to offer a school place listed as a higher preference, parents will be offered the statutory right of appeal against the decision.
17. In such circumstances the offer letter or email will give the reasons why we have been unable to allocate their other stated preferences. Where the statutory right of appeal is the responsibility of North Yorkshire LA we will inform the parents where the appeal forms can be located on the NYCC website.
18. Where the responsibility is that of another admissions authority, we will advise parents to contact them to confirm appeal arrangements.
19. Where the LA has multiple appeals for one school these will be grouped appeals unless the authority decides that this would not be appropriate.
20. Parents who have been refused a place at a North Yorkshire school by their home authority will be informed that they should contact us to discuss the appeals process.
21. The outcome of successful admission appeals will lead to further modifications to the original allocation. These changes must again be communicated to other admission authorities (and theirs to us) to enable all authorities to make final adjustments to the allocation.
22. Once appeals have been completed we will communicate with all the schools within our boundary to ensure that they have a correct and up-to-date allocation list.

## Waiting Lists

23. A waiting list will be maintained for all oversubscribed Community, Voluntary Controlled, Voluntary Aided, Foundation, Trust Schools and Academies including Free Schools until 31 December 2021. Each child added will require the list to be ranked again in line with the published oversubscription criteria.
24. The LA requires the governing body of Voluntary Aided, Foundation, Trust School and Academies including Free Schools to update us when places become available unless

the LA are maintaining the schools waiting list on their behalf. The co-ordination regulations require that any offer of a school place must always be made by the LA.

25. Where places become available they will be allocated from the waiting list in accordance with the published oversubscription criteria. The school admissions team will offer the place to the child at the top of the waiting list. Parents will have five working days to reply before the place is offered to another child. If North Yorkshire Council, after using all advised contact details, is unable to contact a successful applicant to offer a place, the available place will be offered to the next child who qualifies for that place from the waiting list. The authority will confirm, in writing, that your child has been removed from the waiting list. Should you wish for your child (ren) to be placed back on the waiting list you would need to notify the LA in writing. It is the applicant's responsibility to keep the authority informed of updated contact and address details.
26. If you change address whilst your child is on a waiting list, you need to send evidence of your new address. If your new address affects your child's position(s) on any waiting list(s), then they will be changed accordingly.
27. Where we are able to offer a place to a non-North Yorkshire child from the waiting list we will liaise with their home authority.

## Secondary Transfer Scheme 2021/22

28. The secondary scheme enables parents living within North Yorkshire whose children are transferring to secondary school to complete a single application either on-line or in paper form.
29. The parents of Year 6 children who will be Year 7 in September 2021 will be informed by letter via their child's primary school that they will need to apply on-line for a school place. They can express up to 5 preferences for admission to any Community, Voluntary Controlled, Voluntary Aided, Foundation, Trust schools and Academies including Free Schools both within North Yorkshire and neighbouring LA area, giving reasons for their preferences where appropriate.
30. Parents without internet access will be informed that they will need to contact the admissions team for a paper copy of the common application form to enable them to apply for a school place for their child.
31. Parents will be informed that supplementary information may also be requested by Voluntary Aided, Academies including Free Schools or non-North Yorkshire schools, in order for the school to apply their oversubscription criteria.
32. Common application forms will be required for all transfers at Year 7. Applications for any other year group, apart from the normal year of entry (Year 7) will be dealt with as in-year applications.
33. Parents must return their applications by the closing date of 31 October 2020.

34. Parents will not be allowed to change their preferences after 31 October 2020 without a reason that is acceptable to the admission authority.
35. Parents who wish their children to attend independent schools will be encouraged to tell us. Independent schools are not included in the co-ordinated arrangements. These parents may also wish to apply for a place at a North Yorkshire school.
36. If parents living outside of North Yorkshire enquire about our schools they will be directed to the North Yorkshire County Council website. Parents will be advised to complete a common application form for their home authority.
37. On the common application form parents will need to provide their child's name and residential address. The address provided must be where the child lives permanently. If residency is split, the address provided should be the place where the child lives for the majority of the school week (Monday to Friday). Confirmation and agreement in writing by both parents will be required.
38. The offer of a single school place will be made on 1 March 2021 and allocation emails will be sent on that date. For those who have completed a paper application or requested a letter, letters will be sent on that date by second class post.
39. We will offer a place at a North Yorkshire school even if parents have not completed a common application form because we have a duty to ensure a school place is available for every North Yorkshire child.
40. Parents who do not wish to accept a place at a school offered to them must notify the admission authority as soon as possible in writing advising the LA of the alternative provision that is being made. Without this information the place will remain allocated.
41. The timetable for secondary school admissions is attached at Appendix 1 of the Co-ordinated Admissions Arrangements, Secondary Transfer 2021/22.

## Selection

42. There are 3 selective grammar schools within North Yorkshire; a Voluntary Aided boys' school, a mixed co-educational school and a girls' school which has Academy Trust status.
43. If a child is entered for selection testing, parents must make sure that they name the selective school they would like them to attend on the common application form.

**Skipton Selection**

44. Places will normally be provided at Ermysted's Grammar School for boys who are deemed suitable for a grammar school education in accordance with the agreed selection scheme and who live in the area served by the primary schools in Beamsley, Bradley, Burnsall, Carleton, Cracoe, Embsay, Gargrave, Grassington, Kettlewell, Kirkby-in-Malhamdale, Skipton, Thornton-in-Craven and Threshfield. Ermysted's Grammar School is a selective grammar school that offers education to boys aged 11 to 18. Children can only be admitted to Ermysted's Grammar School if they have been deemed suitable for a grammar school education.
45. The governing bodies of Ermysted's Grammar School (Voluntary Aided) and Skipton Girls' High School (Academy Trust) are responsible for applying their own admissions policies and the LA applies the published co-ordinated admissions arrangements on behalf of these schools.
46. Skipton Girls' High School is a selective grammar school that offers education to girls aged 11 to 18 who are deemed suitable for a grammar school education in accordance with their selection scheme.
47. The Skipton Academy is a non-selective Academy and Upper Wharfedale School is a non-selective secondary school in a selective area offering education for children aged 11 to 16.

**Ripon Selection**

48. Places will normally be provided at Outwood Academy Ripon and Ripon Grammar School for children who live in the City of Ripon together with the parishes of Aldfield, Azerley, Bishop Monkton, Bridge Hewick, Burton Leonard, Copt Hewick, Eavestone, Givendale, Grantley, Grewelthorpe, Hutton Conyers, Kirkby Malzeard, Laverton, Lindrick, with Studley Royal and Fountains, Littlethorpe, Markenfield Hall, Markington-with-Wallerthwaite, Newby-with-Mulwith, North Stainley with Sleningfird, Sawley, Sharow, Skelding, Skelton, Studley Roger and Winksley.
49. Outwood Academy Ripon is a non-selective Academy in a selective area offering education for children aged 11 to 18. Ripon Grammar School is a selective grammar school that offers an education for children aged 11 to 18. Children can only be admitted to Ripon Grammar School if they have been deemed suitable for a grammar school education, in accordance with the LA selection scheme. The LA administers both the published selection scheme and the allocation of school places at Ripon Grammar School as it is a community school. The LA will apply the published co-ordinated admission arrangements on behalf of both Outwood Academy Ripon and Ripon Grammar School.
50. All children living and attending schools within the area served by the Ripon schools will be invited to sit the selection tests. Parents will be required to return a reply slip.

**Selection tests**

51. Tests for all forms of selection must be clear and objective and give an accurate reflection of the child's ability or aptitude, irrespective of sex, race or disability. It is for the admission authority to decide the content of the test, providing that the test is a true test of aptitude or ability.
52. The results of these selection tests are used to identify the highest scoring 28% or as close as possible of Year 6 children who live in the Ripon selective area. This procedure sets the cut-off mark in the selective area and sets the standard which children in Ripon must reach, to be deemed suitable for grammar school education.
53. For us to consider children who live outside the selective area to be deemed suitable for a grammar school education at Ripon Grammar School they must reach the cut-off mark which is set by the performance of the children who live in the selective area, as explained above.
54. There is no guarantee that children who reach the cut-off mark in the selection tests will be allocated a place at a grammar school. If the school is oversubscribed with children who are deemed suitable for a grammar school education, places will be allocated using the published oversubscription criteria.
55. The LA ensures that parents are aware that meeting the academic requirements for entry to Ripon Grammar School is not, in itself, a guarantee of a Grammar School place.
56. If a child is refused a place at the school on 1 March 2021, parents will be offered their statutory right of appeal for a place at the school.
57. The School Admissions Code 2014 states that LAs should take all reasonable steps to inform parents of the outcome of selection tests before the closing date for secondary applications on 31 October so as to allow parents time to make an informed decision when selecting their preferences.
58. The LA must ensure that tests are accessible to children with special educational needs and disabilities, having regard to the reasonable adjustments for pupils with a disability required under equalities legislation.

**Selection Testing 2021/22**

59. Selection testing will take place in September 2020 and the results of selection testing will be sent out to parents on 09 October 2020.
60. Late tests will take place on designated dates during the year. There will be dates set in January for any children moving into the area or for any children where there is a genuine reason that is agreed by the LA. Any other late tests will take place in April, June and August.



## Primary Transfer Scheme 2021/22

61. The primary scheme enables parents living within North Yorkshire to complete a single application either on-line or in paper form listing up to five preferences for admission to any primary, infant or junior schools both within North Yorkshire and neighbouring LA areas, giving reasons for their preferences where appropriate.
62. Parents without internet access will be able to contact the LA for a common application form to enable them to apply for a primary school place for their child.
63. If parents list a Voluntary Aided school or Academy including Free Schools as a preference the school may request supplementary information in order for them to apply their oversubscription criteria.
64. Parents must return the common application forms by the deadline of 15 January 2021.
65. Parents will not be allowed to change their preferences after 15 January 2021 without a reason that is acceptable to the admission authority.
66. Parents who wish their children to attend an independent school will be encouraged to tell us. Independent schools are not included in the co-ordinated arrangements. These parents may also wish to apply for a place at a North Yorkshire school.
67. If parents living outside of North Yorkshire enquire about our schools they will be directed to the North Yorkshire County Council website. Parents will be advised to complete a common application form for their home authority.
68. On the common application form parents will need to provide their child's name and residential address. The address provided must be where the child lives permanently. If residency is split between two parents, the address used must be the address where the child lives for the majority of the school week (Monday to Friday). Confirmation and agreement in writing from both parents will be required.
69. For primary school applications, all offers must be made on the 16 April 2021.
70. Parents who do not wish to accept a place at a school offered to them must notify the admission authority as soon as possible in writing advising the LA of the alternative provision that is being made. Without this information the place will remain allocated.
71. The timetable for primary school admissions is attached at Appendix 2 of the Co-ordinated Admissions Arrangements, Primary Transfer 2021/22.

## Appendix 1

*North Yorkshire Local Authority**Secondary, Community, Voluntary Controlled, Aided, Foundation, Trust Schools and Academies Timetable 2021/22*

Date	Activity
<b>28 June 2020</b>	Closing date for <b>applications</b> to sit the selection tests for children who are not automatically entered for selection. Closing date for <b>withdrawal</b> of children who are automatically entered for selection testing.
<b>September 2020</b>	Parents informed by letter from the LA via child's primary school to apply on-line and details are provided. Parents without internet access to contact the LA for information.
<b>September 2020</b>	Application round to apply for a secondary school place will open.
<b>September 2020</b>	Proposed selection testing date for Ripon for all children (to be confirmed)
<b>09 October 2020</b>	Results of selection testing posted to all parents
<b>31 October 2020</b>	Closing date for return of secondary Common Application Forms.
<b>12 November 2020</b>	Neighbouring LAs to send us details of children in their area who have expressed preferences for schools in North Yorkshire. We send details of children expressing preferences for schools in other LA areas to those authorities for consideration.
<b>20 November 2020</b>	Details of all children who have expressed preferences for North Yorkshire Academies, Voluntary Aided, Foundation and Trust schools sent to the schools for consideration.
<b>21 December 2020</b>	Final day for receipt of any changes to applications
<b>11 January 2021</b>	Information to be returned to us by Voluntary Aided, Foundation and Trust schools on which places they can allocate.
<b>18 January 2021</b>	First round of allocation information sent to other authorities identifying potential offer(s).
<b>29 January 2021</b>	Confirmation of allocations with neighbouring admission authorities including Academies, Voluntary Aided, Foundation and Trust schools.
<b>29 January 2021</b>	Input information from first cycle of exchange of allocation information.
<b>05 February 2021</b>	Second round of allocation information sent to other authorities.
<b>12 February 2021</b>	Input allocation information from second cycle and send final allocation information to other authorities of school place offers to be made.
<b>19 February 2021</b>	Input final allocation preference information and produce final allocation letters.
<b>1 March 2021</b>	National offer day. Send out allocation information to all parents applying for a school place. Inform schools of final allocation.
<b>15 March 2021 to 31 August 2021</b>	Manual adjustments to allocation and communicating those results to other authorities.
<b>April 2021 to July 2021</b>	Statutory admission appeals. These dates may vary.
<b>31 December 2021</b>	Closure of waiting lists.

## Appendix 2

*North Yorkshire Local Authority**Primary for Aided, Community, Voluntary Controlled and Foundation Schools and Academies Timetable 2021/22*

Date	Activity
September 2020	Information for parents and common application forms are available on the NYCC website for North Yorkshire parents. Parents without internet access to contact the LA for information.
15 January 2021	Closing date for the return of Common Application Forms.
22 January 2021	Neighbouring LAs to send us details of children in their area who have expressed preferences for schools in North Yorkshire (depending on their timetables). We send details of children expressing preferences for schools in other LA areas to those authorities for consideration.
02 February 2021	The LA send out details of all children who have expressed preferences for North Yorkshire Voluntary Aided, Academy, and Trust schools to the schools for consideration.
12 February 2021	Information to be returned to us by Voluntary Aided, Academy and Trust schools on which places they can allocate.
19 February 2021	Final day for receipt of any changes to applications
10 March 2021	Send first round of allocation information to other authorities identifying potential offer(s).
17 March 2021	Input information from first cycle of parental preferences.
24 March 2021	Send second allocation cycle information to other authorities
31 March 2021	Input preference information from second cycle and send final allocation information to other authorities.
16 April 2021	National offer day. Send out allocation information to all North Yorkshire parents. Inform schools of final allocations.
30 April 2021 to 31 August 2021	Manual adjustments to allocation and communicating those results to other authorities.
June 2021 to July 2021	Statutory admission appeals. These dates may vary
31 December 2021	Closure of waiting list.

## Appendix 3

## Primary Academy, Free Schools and Foundation Schools

<b>Ainderby Steeple CE Primary</b> Station Lane Morton on Swale Northallerton DL7 9QR 01609 773519	<b>Airy Hill Primary School</b> Waterstead Lane WHITBY YO21 1PZ 01947 602688
<b>All Saints Catholic</b> Green Lane Thirsk YO7 1NB 01845 523058	<b>All Saints C of E Primary School</b> KIRKBY OVERBLOW Harrogate HG3 1HD 01423 872491
<b>Appleton Roebuck Primary School</b> Main Street APPLETON ROEBUCK York YO23 7DN 01904 501906	<b>Askwith Community Primary School</b> ASKWITH Otley LS21 2HX 01943 462896
<b>Aspin Park Academy</b> Wetherby Road KNARESBOROUGH HG5 8LQ 01423 863920	<b>Baldersby St James CE Primary School</b> BALDERSBY ST JAMES Thirsk YO7 4PT 01765 640277
<b>Barton CE Primary School</b> Silver Street BARTON Richmond DL10 6LJ 01325 377246	<b>Braeburn Primary &amp; Nursery Academy</b> Eastfield SCARBOROUGH YO11 3LG 01723 582616
<b>Brotherton &amp; Byram CP Academy</b> Low Street BROTHERTON Knottingley, West Yorkshire WF11 9HQ 01977 672676	<b>Camblesforth CP Academy</b> Mill Lane CAMBLESFORTH Selby YO8 8HW 01757 618249
<b>Cambrai Primary School</b> Catterick Road CATTERICK GARRISON DL9 4QP 01325 376719	<b>Carlton Miniott Primary Academy</b> CARLTON MINIOTT Thirsk YO7 4NJ 01845 522088
<b>Castleton Primary School</b> 38 High Street CASTLETON Whitby YO21 2DA 01287 660496	<b>Coppice Valley Primary School</b> Knapping Hill HARROGATE HG1 2DN 01423 563760

## Appendix 3

<b>Croft Church of England Primary School</b> South Parade CROFT-ON-TEES Darlington DL2 2SP 01325 720528	<b>East Cowton CE Primary School</b> EAST COWTON Northallerton DL7 0BD 01325 378347
<b>East Whitby Primary Academy</b> Stainsacre Lane WHITBY YO22 4HU 01947 895369	<b>Ebor Filey CE Infant &amp; Nursery Academy</b> Padbury Avenue FILEY YO14 0BA 01723 513077
<b>Forest of Galtres Anglican/Methodist Primary School</b> Station Lane SHIPTON BY BENINGBROUGH York YO30 1AG 01904 470272	<b>Friarage Community Primary</b> Longwestgate Scarborough YO11 1QB 01723 374244
<b>Glaisdale Primary School</b> GLAISDALE Whitby YO21 2PZ 01947 897218	<b>Great Smeaton Academy Primary School,</b> GREAT SMEATON Northallerton DL6 2EQ 01609 881349
<b>Hampsthwaite CE Primary</b> Church Lane HAMPSTHWAITE Harrogate HG3 2EZ 01423 771336	<b>Harrogate Bilton Grange CP School</b> Bilton Lane HARROGATE HG1 3BA 01423 502375
<b>Hawes Primary School,</b> Town Head HAWES DL8 3RQ 01969 667308	<b>Hookstone Chase Primary School</b> Hookstone Chase HARROGATE HG2 7DJ 01423 886026
<b>Keeble Gateway Academy</b> SOWERBY Thirsk YO7 3HF 01845 448227	<b>Kellington Primary School</b> Roall Lane KELLINGTON Goole DN14 0NY 01977 661127

<b>Kirk Fenton CE Primary School</b> Main Street CHURCH FENTON Tadcaster LS24 9RF 01937 557228	<b>Kirkby Fleetham CE Primary School</b> Forge Lane KIRKBY FLEETHAM Northallerton DL7 0SA 01609 748431
<b>Knaresborough St Johns</b> Stockwell Road KNARESBOROUGH HG5 0JN 01423 863265	<b>Knayton Church of England Academy</b> Stockton Road KNAYTON Thirsk YO7 4AN 01845 537291
<b>Lealholm Primary School</b> LEALHOLM Whitby YO21 2AQ 01947 897401	<b>Leyburn Primary School</b> Wensleydale Avenue LEYBURN DL8 5SD 01969 623187
<b>Lothersdale Primary School</b> Lothersdale Keighley West Yorkshire, BD20 8HB 01535 632510	<b>Marton cum Grafton CE</b> Reas Lane Marton Cum Grafton Boroughbridge York YO51 9QB 01423 322355
<b>Meadowside Primary Academy</b> Halfpenny Lane KNARESBOROUGH HG5 0SL 01423 866207	<b>Monk Fryston CE Primary School</b> Chestnut Green Monk Fryston LEEDS LS25 5PN 01977 682388
<b>New Park Primary Academy</b> Skipton Road HARROGATE HG1 3HF 01423 503011	<b>Newby and Scalby Primary School</b> The Green Newby SCARBOROUGH YO12 5JA 01723 365686
<b>North Rigton CE Primary School</b> Hall Green Lane North Rigton LEEDS LS17 0DW 01423 734540	<b>Oatlands Infant School</b> Hookstone Road HARROGATE HG2 8BT 01423 871036

<p><b>Oatlands Community Junior School</b> Beechwood Grove HARROGATE HG2 8QP 01423 872827</p>	<p><b>Outwood Primary Academy Greystone</b> Quarry Moor Lane RIPON HG4 1RW 01765 603481</p>
<p><b>Pannal Primary School</b> Pannal Green Pannal HARROGATE HG3 1LH 01423 872407</p>	<p><b>Ravenworth CE Primary School</b> Ravenworth RICHMOND DL11 7ET 01325 718375</p>
<p><b>Richard Taylor CE Primary School</b> Bilton Lane HARROGATE HG1 3DT 01423 886026</p>	<p><b>Riverside School, Tadcaster</b> Wetherby Road TADCASTER LS24 9JN 01937 832899</p>
<p><b>Roseberry Academy</b> Roseberry Crescent Great Ayton MIDDLESBROUGH TS9 6EP 01642 722883</p>	<p><b>Rossett Acre Primary School</b> Pannal Ash Road HARROGATE HG2 9PH 01423 561579</p>
<p><b>Sacred Heart Catholic Primary School - a Catholic voluntary academy</b> Broomfield Avenue NORTHALLERTON DL7 8UL 01609 780971</p>	<p><b>Saxton CE Primary School</b> Dam Lane Saxton TADCASTER LS24 9QF 01937 557396</p>
<p><b>Selby Community Primary School</b> Flaxley Road SELBY YO8 4DL 01757 702464</p>	<p><b>Sherburn Hungate Primary School</b> North Crescent Sherburn-in-Elmet LEEDS LS25 6DD 01977 682434</p>
<p><b>South Milford Primary School</b> Sand Lane South Milford LEEDS LS25 5AU 01977 682359</p>	<p><b>South Otterington Church of England Primary School</b> South Otterington NORTHALLERTON DL7 9HD 01609 776273</p>
<p><b>Sowerby Primary Academy</b> Topcliffe Road THIRSK YO7 1RX 01845 523037</p>	<p><b>St Benedict's Catholic Primary School - a Catholic voluntary academy</b> Back Lane AMPLEFORTH York YO62 4DE 01439 788340</p>

<p><b>St George's Catholic Primary School - a Catholic voluntary academy</b> Overdale EASTFIELD Scarborough YO11 3RE 01723 583535</p>	<p><b>St Joseph's Catholic Primary School, Harrogate, A Voluntary Academy</b> Coppice Rise HARROGATE HG1 2DP 01423 562650</p>
<p><b>St Joseph's Catholic Primary School - a Catholic voluntary academy</b> Swainsea Lane PICKERING YO18 8AR 01751 473102</p>	<p><b>St Mary's Primary School Knaresborough, A Voluntary Catholic Academy</b> Tentergate Road KNARESBOROUGH HG5 9BG 01423 864631</p>
<p><b>St Mary's Catholic Primary School - a Catholic voluntary academy</b> Highfield Road MALTON YO17 7DB 01653 692274</p>	<p><b>St Mary's Catholic Primary School - a Catholic voluntary academy</b> Cross Lanes RICHMOND DI10 7DZ 01748 822365</p>
<p><b>St Peter's Church of England Primary School</b> Belford Road HARROGATE HG1 1JA 01423 569684</p>	<p><b>St Peter's Catholic Primary School - a Catholic voluntary academy</b> North Leas Avenue SCARBOROUGH YO12 6LX 01723 372720</p>
<p><b>St Stephen's Catholic Primary School and Nursery, A Voluntary Academy</b> Gargrave Road SKIPTON BD23 1PJ 01756 668395</p>	<p><b>Stakesby Primary Academy</b> Byland Road WHITBY YO21 1HY 01947 820231</p>
<p><b>Starbeck Primary Academy</b> High Street Starbeck HARROGATE HG2 7LL 01423 884780</p>	<p><b>Staynor Hall Primary Academy</b> Staynor Link SELBY YO8 8GE 01757 681334</p>
<p><b>Stokesley Primary School</b> No. 5 Springfield Stokesley MIDDLESBROUGH TS9 5EW Tel No: 01642 711071</p>	<p><b>Tadcaster Primary Academy</b> Grange Avenue TADCASTER LS24 8AN Tel No: 01937 833795</p>



<b>Thomas Hinderwell Primary Academy</b> <b>Seamer Road</b> SCARBOROUGH YO12 4HF Tel No: 01723 373110	<b>Tockwith Church of England Primary Academy</b> Southfield Lane TOCKWITH York YO26 7RP 01423 358375
<b>Topcliffe C of E Academy</b> School Lane Topcliffe THIRSK YO7 3RG Tel No: 01845 577412	<b>Trinity Academy Eppleby Forcett</b> Eppleby RICHMOND DL11 7AY 01325 718298
<b>Trinity Academy Middleton Tyas</b> Kneeton Lane Middleton Tyas RICHMOND DL10 6SF Tel No: 01325 377285	<b>Trinity Academy Richmond</b> Frances Road RICHMOND DL10 4NF 01748 822104
<b>West Cliff Primary School</b> Church Square WHITBY YO21 3EG Tel No: 01947 602510	<b>Western Primary School</b> Cold Bath Road HARROGATE HG2 0NA Tel No: 01423 502737
<b>Nun Monkton Primary Foundation School</b> The Green Nun Monkton YORK YO26 8ER Tel No: 01423 330313	

## 1. Primary Voluntary Aided Primary Schools

<b>Austwick C of E (VA) Primary School</b> AUSTWICK Lancaster LA2 8BN 015242 51366	<b>Barkston Ash Catholic Primary School</b> London Road Barkston Ash TADCASTER LS24 9PS 01937 557373
<b>St Mary's C of E Primary School</b> Bolton-on-Swale Scorton RICHMOND 01748 818401	<b>Burneston C of E (VA) Primary School</b> BURNESTON Bedale 01677 423183
<b>Burnsall VA Primary School</b> BURNSALL Skipton BD23 6BP 01756 720273	<b>Carleton Endowed School</b> Carleton SKIPTON BD23 3DE 01756 792910
<b>Carlton and Faceby C of E VA Primary School</b> CARLTON-IN-CELEVELAND Middlesbrough Cleveland TS9 7BB 01642 712340	<b>Cawood C of E VA Primary School</b> Broad Lane CAWOOD Selby YO8 3SQ 01757 268368
<b>Dacre Braithwaite C of E Primary School</b> SUMMERBRIDGE Harrogate HG3 4AN 01423 780285	<b>Egton C of E VA Primary School</b> EGTON Whitby YO21 1UT 01947 895369
<b>Kirkby in Malhamdale United VA Primary School</b> KIRKBY MALHAM Skipton 01729 830214	<b>Kirkby &amp; Great Broughton CofE VA Primary School</b> KIRKBY-IN-CLEVELAND Middlesbrough TS9 7AL 01642 714707
<b>Long Preston Endowed VA Primary School</b> School Lane LONG PRESTON Skipton BD23 4PN 01729 840377	<b>Masham C of E VA Primary School</b> 1 Millgate MASHAM Ripon HG4 4EG 01765 689200

<p><b>Michael Syddall C of E (Aided) Primary School</b> Mowbray Road CATTERICK VILLAGE Richmond DL10 7LH 01748 818485</p>	<p><b>Middleham C of E Aided School</b> Park Lane MIDDLEHAM Leyburn DL8 4QX 01969 623592</p>
<p><b>Ripon Cathedral CE Primary School</b> Priest Lane RIPON HG4 1LT 01765 602355</p>	<p><b>St Hedda's RC Primary School</b> EGTON BRIDGE Whitby YO21 1UX 01947 895361</p>
<p><b>St Hilda's RC Primary School</b> Waterstead Lane WHITBY YO21 1PZ 01947 603901</p>	<p><b>St Joseph's Catholic Primary School</b> Station Road TADCASTER LS24 9JG 01937 832344</p>
<p><b>St Martin's C of E VA Primary School</b> Holbeck Hill SCARBOROUGH YO11 3BW 01723 360239</p>	<p><b>St Mary's Catholic Primary School</b> Baffam lane SELBY YO8 9AX 01757 706616</p>
<p><b>St Peter's C of E VA Primary School</b> BRAFFERTON Helperby, York YO61 2PA 01423 360250</p>	<p><b>St Robert's Catholic Primary School</b> Ainsty Road HARROGATE HG1 4AP 01423 504730</p>
<p><b>St Wilfrid's Catholic Primary School</b> Church lane RIPON HG4 2ES 01765 603232</p>	<p><b>Terrington C of E VA Primary School</b> TERRINGTON York YO60 6NS 01653 6483340</p>
<p><b>The Boyle &amp; Petyt Primary School</b> Harrogate Road BEAMSLEY Skipton BD23 6HE 01756 710378</p>	

## Appendix 4

Voluntary Aided, Academies, and Free secondary schools are listed below:

**Academies / Free Secondary Schools:**

<p><b>Barlby High School</b> York Road BARLBY Selby YO8 5JP 01757 706161</p>	<p><b>Rodillian (Brayton) Academy</b> Doncaster Road BRAYT ON Selby YO8 9QS</p>
<p><b>Ebor Academy Filey</b> Muston Road FILEY YO14 0HG 01723 512354</p>	<p><b>George Pindar Community Sports College</b> Eastfield SCARBOROUGH YO11 3LX 01723 582194</p>
<p><b>Graham School</b> Woodlands Drive SCARBOROUGH YO12 6QW 01723 366451</p>	<p><b>Harrogate Grammar School</b> Arthurs Avenue HARROGATE HG2 0DZ 01423 531127</p>
<p><b>Harrogate High School</b> Ainsty Road HARROGATE HG1 4AP 01423 548800</p>	<p><b>Northallerton School &amp; Sixth Form College</b> Grammar School Lane NORTHALLERTON DL6 1DD 01609 773340</p>
<p><b>Norton College</b> Langton Road NORTON Malton YO17 9PT 01653 693296</p>	<p><b>Outwood Academy Easingwold</b> York Road EASINGWOLD York YO61 3EF 01347 821451</p>
<p><b>Outwood Academy Ripon</b> Clotherholme Road Ripon HG4 2DE 01765 604564</p>	<p><b>Richmond School</b> Darlington Road RICHMOND DL10 7BQ 01748 850111</p>
<p><b>Rossett School</b> Green Lane HARROGATE HG2 9JP 01757 707731</p>	<p><b>Scalby School</b> Fieldstead Crescent Newby SCARBOROU GH YO12 6TH 01723 362301</p>
<p><b>Sherburn High School</b> Garden Lane SHERBURN-IN-ELMET Leeds LS25 6AS 01977 682442</p>	<p><b>Skipton Girls' High School</b> Gargrave Road SKIPTON BD23 1QL 01756 707600</p>

**Appendix 4**

<b>South Craven School</b> Holme Lane CROSSHILLS Keighley BD20 7RL 01535 632861	<b>St Aidan's C of E High School</b> Oatlands Drive HARROGATE HG2 8JR 01423 885814
<b>St Augustine's Catholic School - a Catholic voluntary academy</b> Sandybed Lane Stepney Hill SCARBOROUGH YO12 5LH 01723 363280	<b>St Francis Xavier School - a Joint Catholic and Church of England Voluntary Academy</b> Darlington Road RICHMOND DL10 7DA 01748 823414
<b>Stokesley School</b> Station Road STOKESLEY Middlesbrough TS9 5AL 01642 710050	<b>Tadcaster Grammar School</b> Toulston TADCASTER LS24 9NB 01937 833466
<b>The Skipton Academy</b> Gargrave Road SKIPTON BD23 1UQ 01756 792965	<b>Scarborough University Technical College</b> Ashburn Rise SCARBOROUGH YO11 2JW 01723 821621

**Voluntary Aided Secondary Schools:**

<b>Ermysted's Grammar School</b> Gargrave Road SKIPTON BD23 1PL 01756 792186	<b>Holy Family Catholic High School</b> Longhedge Lane CARLTON Goole East Yorkshire DN14 9NS Tel No. 01405 860276
<b>St John Fisher Catholic High</b> Hookstone Drive HARROGATE HG2 8PT 01423 887254	

## Appendix 5

**Neighbouring Local Authorities**

Our thirteen neighbouring admission authorities

<p><b>Bradford</b> Pupil Access Manager Education Bradford Future House Bolling Road BRADFORD BD4 7EB 01274 385604</p>	<p><b>Cumbria</b> Corporate Director – Pupils Services 5 Portland Square CARLISLE CA1 1PU 01228 606877</p>	<p><b>Darlington</b> Pupils’s Information Service Town Hall, Feethams DARLINGTON DL1 5QT 01325 380651</p>
<p><b>Doncaster</b> <b>Director</b> of Education and Culture Admissions and Pupil Services The Council House College Road DONCASTER DN1 3AD 01302 737204/727234</p>	<p><b>Durham</b> School Admissions Education Offices County Hall DURHAM DH1 5UJ 0191 383 3115</p>	<p><b>East Riding of Yorkshire</b> Admissions Team Pupils, Family &amp; Adult Services County Hall BEVERLEY HU17 9BA 01482 392130/392131/392132</p>
<p><b>Lancashire</b> Director of Education PO Box 61 County Hall PRESTON PR1 0LD 01772 254868</p>	<p><b>Leeds</b> Admissions &amp; Transport Team Leeds Education 10<sup>th</sup> Floor West Merrion House LEEDS LS2 8DT 0113 2475729</p>	<p><b>Middlesbrough</b> Corporate Director, Families and Learning Middlesbrough Council PO Box 69, First Floor Vancouver House Gurney Street MIDDLESBROUGH TS1 1 EL 01642 728092</p>
<p><b>Redcar and Cleveland</b> School Admissions Redcar and Cleveland Borough Council, Council Offices PO Box 83, Kirkleatham Street REDCAR TS10 1YA 01642 444108</p>	<p><b>Stockton on Tees</b> School Admissions Stockton-on-Tees Borough Council PO Box 228, Muncipal Buildings Church Road STOCKTON ON TEES TS18 1XE 01642 526605</p>	<p><b>Wakefield</b> School Admissions County Hall, WAKEFIELD WF1 2QL 01924 305616/305617</p>
<p><b>City of York</b> School Services Children, Education and Communities City of York Council, West Offices Station Rise YORK 01904 551554</p>		



CO-ORDINATED ADMISSION  
ARRANGEMENTS

PRIMARY & SECONDARY  
IN-YEAR ADMISSIONS 2021/22

## Introduction

1. In-year admissions are those which occur outside of the normal admissions round. The normal admissions round refers to admissions which admit children into infant, junior, primary or secondary school in the first year of entry. These applications become in-year if they are submitted on or after the first day of the first school term of the admission year.
2. There is no requirement for LAs to co-ordinate in-year applications from the offer year 2014/15 and all subsequent years but they must provide information on their website to show how in-year applications can be made and will be dealt with. LAs must, on request, provide information to a parent about the places available in all schools within its area. A preference form must be completed by parents when applying for a school place for their child at any Community or Voluntary Controlled school within North Yorkshire. A preference form will also need to be completed for any Voluntary Aided, Foundation, Trust primary and secondary schools and Academies including Free Schools that have agreed North Yorkshire LA will continue co-ordinating in-year admissions on their behalf. Any parent can apply for a place for their child at any time to any school.
3. In determining applications for school places outside the normal admissions round, whether in-year or at the start of a school year which is not a normal point of entry to the school, admission authorities must comply with parental preference unless the published oversubscription criteria or one of the statutory reasons for refusing admission applies.
4. All applications outside of the normal admissions round for Community, Voluntary Controlled and any Voluntary Aided, Foundation, Trust, primary and secondary schools and Academies including Free Schools that have agreed to continue co-ordinating with North Yorkshire LA will be processed and if applicable offered by the LA. Schools that are their own admission authority and are not continuing to co-ordinate in-year admissions with North Yorkshire LA must communicate the availability of places to the LA when requested and must, when in receipt of an in-year application notify the LA of both the application and its outcome. The Admission Authority must also inform parents of their right to appeal against the refusal of a school place.
5. Each LA must have a Fair Access Protocol, agreed with the majority of schools in its area to ensure that, outside the normal admissions round, unplaced children, especially the most vulnerable, are offered a place at a suitable school as quickly as possible. There is no duty for LAs or admission authorities to comply with parental preference when allocating places through the Fair Access Protocol.
6. Parents who do not wish to accept a place at a school offered to them must notify the admission authority in writing within 2 weeks of the offer being made.

## Applying for a school place

7. North Yorkshire LA in-year preference forms must be completed by parents living or moving into North Yorkshire requesting a place at any North Yorkshire primary or secondary school. Proof of residency may be required.
8. If a child already attending a North Yorkshire school wishes to transfer to another school, parents should, in the first instance discuss the transfer with the current school.



9. Where a child is moving within or into North Yorkshire and is unable to attend the previous school and is without a school place, the application will be processed as soon as possible. Where a child already has a school place but is seeking an alternative school without moving, the application will be processed within a timescale that will enable the child to commence at the proposed new school at the start of the next term or half term. If there are more applications than places available for that year group, the oversubscription criteria will be applied.
10. Where UK passport holders or EU passport holders\* apply for a school place whilst living abroad, the application will be processed whilst they are still abroad up to 6 weeks in advance of the requested start date. For non EU residents applications will be processed on their arrival in the UK. Exceptions to this would be when an application is received from a forces family which is accompanied by a posting order/assignment order or an official letter that declares a relocation date and a unit postal address or an area address. We would accept a UK address from parents living abroad if they have an address in the UK and they can provide proof that they lived at that address immediately prior to their move abroad and will be returning to that same property.

\*Brexit - At the time this document is written we have new guidance from the government in respect of Brexit in respect of school places for EU nationals and UK pupils returning to England from the EU after Brexit. This guidance confirms that:

Schools and local authorities cannot take into account nationality or immigration status when deciding which pupils to admit. There will be no change to this as a result of the UK leaving the EU.

EU, EEA and Swiss citizens, who are eligible for the EU Settlement Scheme, will continue to be entitled to attend a state-funded school. If the UK leaves the EU without a deal, EU, EEA and Swiss citizens who successfully apply for [European temporary leave to remain](#), will also be entitled to attend a state-funded school until their temporary leave to remain ends. After that time, the UK's new immigration system will apply to them.

EU, EEA and Swiss children arriving after 31 December 2020, who are not dependents of UK residents or of parents in the UK on a work or study visa - and who wish to study in the UK, will need to meet the requirements of the future immigration system. This will not permit non-dependent foreign national children to enter the country to attend a state-funded school.

State-funded schools that routinely recruit EU, EEA and Swiss nationals from overseas should reconsider their recruitment strategy in light of the above changes to the immigration system.

The right of Irish nationals to access education will continue to be protected under the [Common Travel Area](#) arrangements.

Where necessary Home Office guidance will be sought.

11. When we receive an in-year preference form from a parent living in North Yorkshire requesting any North Yorkshire school, we will process the form by attempting to comply with the parent's highest ranked preference of school. We will liaise with the school listed as their highest preference.

12. If we are able to allocate the highest ranked preference on the form we will send an offer of that school place to the parent. If we are unable to allocate a place we will offer the statutory right of appeal and will then consider other schools listed in order of preference and will offer a place at one of those schools if possible. If we are unable to do so we will again offer parents the statutory right of appeal or ask that the governors of Voluntary Aided, Foundation or Trust schools who have agreed for North Yorkshire LA to co-ordinate in-year admissions to do so. Parents can appeal for a place at an Academy including Free Schools and would need to contact the LA for information on how to do so.
13. When we receive a request for a place in the normal year of entry if the school is oversubscribed a waiting list will be maintained by the relevant admission authority until 31 December 2021.
14. We require a reply within 7 working days from schools informing us if they are able to accommodate additional children. If they are oversubscribed we will offer parents the statutory right of appeal.
15. Voluntary Aided schools or Academies including Free Schools may require parents to complete a supplementary information form available from the school before a school place can be considered.
16. If parents name a school other than their catchment school, they will be responsible for transport.

# Draft In Year Fair Access Protocol

September 2020

# In Year Fair Access Protocol

## **Purpose**

The In Year Fair Access Protocol (known as the Protocol) will ensure that school places for maintained schools and academies are allocated and offered in an open and fair way. Outside the normal admissions round, unplaced children (especially the most vulnerable), must be offered a place at a suitable school as quickly as possible. It is recognised that this action will have a significant impact on both future attendance and achievement.

The School Admission Code which came into force on 1st December 2014 includes a requirement for a Fair Access Protocol (FAP) and describes how it is implemented. This protocol reflects the requirements of the Admissions code. The Protocol must be agreed by the majority of schools and academies and all schools and academies must participate.

The Protocol will be used when a child or young person is identified via the admissions process as IYFA or has not secured a school or academy place through the in-year admission procedures.

The Protocol will also ensure that no school or academy, including those with available places, is asked to take a disproportionate number of children and young people who have been excluded from other schools or academies or who have challenging behaviour.

Once it has been agreed that a child or young person should attend a named school or academy that school or academy must be accountable for that person. There is a collective responsibility to ensure the safeguarding of all young people and we must work together to protect them and act in their best interests. Every young person will be made an offer of an educational place as soon as is reasonably practical and within 30 school days.

## **Principles – Secondary Schools**

It is important to emphasise that, in the vast majority of cases, hard to place children in the categories listed below requiring a school place will continue to be admitted in accordance with the usual admission procedures, rather than through the protocol.

The protocol does not cover the admission of children with an Education Health Care Plan (EHCP) which will continue to be managed through the statutory processes.

All schools, including those who are their own admissions authority agree to admit hard to place pupils. The Fair Access Panel (FAP) will consider a 'weighting' for

small secondary schools where the impact on small year groups may be considerable.

Schools will not insist on an admission appeal being heard before admitting a child under this protocol. There is no duty for local authorities or admission authorities to comply with parental preference when allocating through the In Year Fair Access Protocol.

Schools will not refuse to admit a pupil who has been denied a place at that school at appeal, if through the protocol The FAP identifies that the school as the one to admit the child.

For a pupil to be placed at a North Yorkshire Grammar School in line with the In Year Fair Access criteria, he or she must also meet the academic criteria for that school. It should be noted that designated Grammar schools are permitted under the Education (Grammar School Designation) Order 1998 to select their intake on the basis. It would be appropriate to expect a short delay in the process to enable a child to access the appropriate selective test.

Wherever possible, pupils with a religious affiliation should be matched to a suitable school. If the school with a religious affiliation has already taken pupils under the protocol in that year group, then the pupil may be offered a place at a different school that doesn't have the religious affiliation.

Admissions agreed between secondary schools under the Managed Moves protocol do not count as places allocated under the protocol. The local authority will collate data on the two schemes separately and make the data available to panels on a regular basis.

Whilst working within the spirit of the protocol local FAP's must use discretion and judgement to achieve the best outcome for the child concerned. For example, one school may have compelling reasons (agreed by the FAP) for not admitting to a particular year group at that time. The school might therefore agree to more pupils in a different year group.

Fair Access Protocols should not be used as a means to circumvent the normal in year admissions process. A parent can apply for a place as an in-year admission at any point and is entitled to an appeal when a place is not offered. Schools following receipt of an application should not request that a pupil be considered as a Managed Move (MM) prior to dealing with such an application.

In the event that the majority of schools in an area can no longer support the principles and approach of the local Protocol, all the school heads should initiate a review with the local authority. The existing Protocol, however, remains binding on all schools up until the point at which a new one is adopted.

## **The Process - Secondary**

The Fair Access Protocol must be agreed with the majority of schools in North Yorkshire and all own Admission Authorities must participate in it to ensure that children and young people are allocated a school place quickly.

The operation of the Protocol is triggered when a child is identified as hard to place through the information received, or an eligible child has not secured a school place under in-year admission arrangements. This provision does not apply to children looked after by the local authority; a child previously looked after by the local authority or a child with an Education, Health and Care Plan (EHCP) naming the school in question, as these children must be admitted. (Note 1)

Admission Authorities must not refuse to admit a child thought to be potentially disruptive, or likely to exhibit challenging behaviour, on the grounds that the child is first assessed for special educational needs.

No school will be asked to take a disproportionate number of children who have been excluded from other schools or who have challenging behaviour. Each FAP will determine an appropriate percentage based on local factors.

A list of children and young people that are 'eligible' to be considered is contained at the end of the Protocol.

The Secondary Protocol will be administered through locality Fair Access Panels. The operation of these Panels is described below.

The Primary Protocol will be administered through Fair Access Panels on an ad hoc basis as described below.

## **Membership of the Fair Access Panels - Secondary**

The Secondary Panels will meet in accordance with the frequency agreed by each collaborative. All locality schools will attend and a representative of these schools who has delegated authority will attend. It may be appropriate that council officers are involved along with outside agencies when they have information that could contribute or assist the decision making process.

It is essential the each collaborative clerk records the responses from the FAP, recording and informing the decisions regarding the destination of students referred to the panel. Allocations will be made to schools, regardless of whether they contribute to the meeting, if appropriate and offers made on the day will be binding unless exceptional circumstances or a safeguarding issue comes to light.

## **Principles – Primary Schools**

It is again important to emphasise that, in the vast majority of cases, hard to place children in the categories listed below requiring a school place will continue to be admitted in accordance with the usual admission procedures, rather than through the protocol.

The protocol does not cover the admission of children with an Education Health Care Plan (EHCP) which will continue to be managed through the statutory processes.

All schools, including those who are their own admissions authority agree to admit hard to place pupils. The Fair Access Panel (FAP) will consider a 'weighting' for small primary schools where the impact on small year groups may be considerable.

Schools will not insist on an admission appeal being heard before admitting a child under this protocol. There is no duty for local authorities or admission authorities to comply with parental preference when allocating through the In Year Fair Access protocol.

Schools will not refuse to admit a pupil who has been denied a place at that school at appeal, if the protocol identifies that school as the one to admit the child.

Wherever possible, pupils with a religious affiliation should be matched to a suitable school. If the school with a religious affiliation has already taken pupils under the protocol in that year group, then the pupil may be offered a place at a different school that doesn't have the religious affiliation.

Admissions agreed between schools under a Fresh Start agreement do not count as places allocated under this protocol. The local authority will collate data on the two schemes separately and make the data available to panels on a regular basis.

Whilst working within the spirit of the protocol local FAP's must use discretion and judgement to achieve the best outcome for the child concerned. For example, one school may have compelling reasons (agreed by the FAP) for not admitting to a particular year group at that time. The school might therefore agree to more pupils in a different year group.

Fair Access Protocols should not be used as a means to circumvent the normal in-year admissions process. A parent can apply for a place as an in-year admission at any point and is entitled to an appeal when a place is not offered.

In the event that the majority of primary schools in an area can no longer support the principles and approach of the local Protocol, all the school heads should initiate a review with the local authority. The existing Protocol however remains binding on all schools up until the point at which a new one is adopted

## **The Process – Primary**

The Fair Access Protocol must be agreed with the majority of schools in North Yorkshire and all own Admission Authorities must participate in it to ensure that children and young people are allocated a school place quickly.

The operation of the Protocol is triggered when a child is identified as hard to place through the information received, or an eligible child has not secured a school place under in-year admission arrangements. This provision does not apply to children looked after by the local authority; a child previously looked after by the local authority or a child with a statement of special educational needs naming the school in question, as these children must be admitted. (Note 1)

Admission Authorities must not refuse to admit a child thought to be potentially disruptive, or likely to exhibit challenging behaviour, on the grounds that the child is first to be assessed for special educational needs.

No school will be asked to take a disproportionate number of children who have been excluded from other schools or who have challenging behaviour. Each FAP will determine an appropriate percentage based on local factors.

A list of children and young people that are 'eligible' to be considered is contained at the end of the Protocol.

The Primary Protocol will be administered through locality Fair Access Panels which will be convened on an ad hoc basis. The operation of these Panels is described below.

## **Membership of the Fair Access Panels – Primary**

It is expected that the Primary Panels will meet as and when required and the membership would consist of a Local Authority representative(s) and the Head teachers of the preferred school/academy plus other local schools as well as the current school. Other Council officers attending will be from teams within Children's Services - as well as any other team or department within NYCC or outside agencies working with families and young people, to contribute specific information about children and families that they are working with.

## **Monitoring and Accountability**

The school/academy nominated by a Panel will be accountable for the young person once a school place has been agreed at the meeting. Meetings will be held virtually on a weekly basis unless no applications under the IYFA protocol have been received. Meeting dates will be agreed in advance of the academic



year. A record of decisions made by either the secondary or primary FAP will be maintained by the Local Authority following each meeting.

Each young person that is referred to the Panel will be discussed individually and the decision will be made by the FAP as to what they determine is in the child's best interests taking parental preference into consideration and the facts of each case. The decision and the reason for it must be clearly recorded. (Note 2)

Clerks of the Fair Access Panels and the Local Authority should all keep a record of the outcomes of the meetings to avoid any disputes and advise of any issues within five school days of distribution.

In all cases the decision made by the FAP will be relayed in writing by the admissions team to the parent/carer of the young person and the school/academy will contact the family to facilitate the admission.

Where a young person is to be offered a school/academy, the school/academy must meet with the parent/carer of the young person and start the admission of the young person no later than ten school days after the FAP meeting.

The Admissions Team will inform parents of the progress of their case until a start date at an educational provision has been agreed. It is then the responsibility of the educational provider to liaise with the parent/carer.

The information received by admissions from the FAP will form an annual report on IYFA admissions. The completed report will be shared with each FAP and will form the basis of the annual report to the Office of the Schools Adjudicator (OSR) which is a statutory requirement on the Local Authority.

## **Timelines**

It is expected that all parties will act with a sense of urgency to identify a school place for any child who has had difficulty securing one or who falls under the IYFA Protocol. The FAP will act to ensure that schools are held to account for the timeliness of their admissions in line with the IYFA Protocol and must ensure that children are enrolled within the timescales below. Every effort must be made to keep the time out of education to a minimum. Schools agree not to advise parents to:

Remove their child from school and find another school

Remove their child from the roll of the school and Electively Home Educate (EHE)

All schools, including Academies, are expected to respond to requests by the FAP to admit a child under Fair Access Protocols with the aim of securing a place at a suitable school or academy as quickly as possible and although 30 school

days is the maximum stated in this protocol our intention is to act as quickly as possible.

In compliance with the Pupil Registration Regulations the Local Authority must notify the school/academy of the date by which the child is to be admitted and on the school roll.

## **Decision Making**

Children and young people will only be referred to FAP who have been identified as eligible based on the information received by the admissions team or where a child has been refused entry through the normal admissions process, any refusal under the normal admissions process must include a full explanation of why the young person cannot be admitted with regard to the prejudice of efficient education and efficient use of resources. (Note 2)

Where a Fair Access Panel judges that a child is not yet ready for mainstream provision, based on the information provided, they will allocate a school roll and will consider which provisions are appropriate. The school is responsible for securing appropriate full-time educational provision.

The decision as to which school/academy will be offered to a child will be taken by the FAP as a whole. Where a Panel fails to make a decision the Local Authority Inclusion officer will ensure that the schools representatives have input into the decision of any instructions and will support a request for direction from the EFA, or local authority, if required.

Children returning from Elective Home Education should be offered a place at the school which they previously attended if appropriate. If the child now lives outside of the previous school's panel area and there is a more appropriate or accessible school within a different area, an alternative should be considered, once the child is back on roll at their previous school unless there are exceptional circumstances which would prevent a return to that school e.g. safeguarding issues, distance

Children returning to an area in which they previously lived, should be offered a place at the school which they previously attended, unless they left due to extended leave when it is up to the Panel to determine if this is appropriate. The Panel may also consider previous attendance, behaviour and any safeguarding issues in their decision making. This only applies to children continuing in the same phase of education.

Children who are referred to a FAP due to being out of education for two months or more will be referred because they have not accessed any education at all, anywhere.

## **Local Authority Instruction**

If a FAP does not make an offer of a school place, the Local Authority will identify a school/academy to admit the young person taking into consideration the number of young people already accepted by each school under the Protocol and the accessibility of the school/academy for the young person. Consideration can also be given to any other personal circumstances of the young person.

The allocated school/academy may not always be within the Panel area within which the young person lives. (Note 3)

If a school/academy refuses to agree to an 'instruction' from the Local Authority they must put their reasons in writing within seven days. The Local Authority will then consider the reasons given and decide whether or not to issue a direction (community schools) or in the case of Academies refer the matter to the Education Funding Agency (ESFA) using the processes in place to seek a direction.

## **Children and young people eligible to be considered under the protocol**

The list of children included within this FAP includes the following children of compulsory school age who may have difficulty securing a school place:

### **Mandatory**

- a) Children from the criminal justice system or Pupil Referral Units who need to be reintegrated into mainstream education;
- b) Children who have been out of education for two months or more;
- c) Children of Gypsies, Roma, Travellers, refugees and asylum seekers;
- d) Children who are homeless;
- e) Children with unsupportive family backgrounds for whom a place has not been sought;
- f) Children who are carers; and
- g) Children with special educational needs, disabilities or medical conditions (but without an Education, Health and Care Plan).
- h) Children permanently excluded from a school or children with fixed term exclusions exceeding 15 days in the current academic year;
- i) Children without a school place and with a history of serious attendance problems (i.e. less than 85% attendance)

### **Locally agreed categories**

- a) HM Forces children moving into area
- b) Children returning from Elective Home Education (EHE)
- c) Children that have been missing from education (CME)
- d) Children who are permanently excluded who are not placed/referred to the Behaviour & Attendance Collaborative
- e) Children whose parents have been unable to find them a place after moving to the area because of a shortage of places within a 'reasonable distance' as defined in legislation.

### **General application of the protocol**

Following consultation it was agreed that the local authority would revisit the protocol in light of discussions and feedback received. The Local authority has amended the protocol to ensure effective integration of children outside of the normal admission rounds who are vulnerable and to ensure compliance of the requirement within the IYFA protocol (admission code 2014).

As part of the discussion and feedback it was clear that a more effective process would be to use a Fair Access Panel (FAP). The FAP would consist of representatives of existing locality schools within existing areas for secondary's and appropriate primary schools based on a geographical area for primaries. Details on how the FAP will operate can be found at annex 1

### **Transport**

Free or assisted transport will be provided to enable a pupil to attend the school agreed by the panel if it is over two miles from home for primary age pupils under the age of 8 and three miles from home for all other pupils. Transport provision will comply with the Home to School Transport Policy.

### **Financial procedures**

Where a pupil is permanently excluded the excluding school must return any remaining Age Weighted Pupil Unit (AWPU) and Pupil Premium (PP) funding for that particular pupil to the Local Authority for transfer to the receiving school.

### **Cross Border issues**

The Local Authority will consult with neighbouring authorities over financial arrangements and equity for pupils who meet the IYFA protocol, and who attend

school in one authority and live in another. It is the home local authority who has responsibility for the IYFA of their pupils.

## **NOTES:**

### Note 1

Children who are Looked After by the Local Authority or children who are Formerly Looked After by the Local Authority (in accordance with the School Admissions Code of Practice 2014) must always be admitted to the preferenced school when requested by the legal guardian. The Code applies to all schools regardless of status and these requests are dealt with through the normal In Year Admission process.

### Note 2

Admissions undertake background checks with the previous school. On receipt of this information, the Admissions Team will pursue any additional background checks which are needed. This information should provide the FAP with the details required to make an informed decision in the best interest of the child. Details of these decisions should be recorded accurately and retained.

### Note 3

It may sometimes be necessary to instruct a school to take a child even if the child does not live in their area. Any instructions will only be made after careful consideration of the child's individual circumstances and in partnership with the Chair of all Panels affected. This recognises that our geographical boundaries can result in a child having to travel unreasonable distances.

### Note 4

The online mid-year admission application form now contains specific questions in respect of IYFA. The protocol seeks to ensure that access to education is secured quickly for children who have no school place but for whom a place at a mainstream school or alternative provision is appropriate.

Questions within the application form include:

- a) Has the child had more than 15 day's absence from school? (1)
- b) Has the child had a permanent exclusion? (7)
- c) Has the child had a fixed term exclusion from any school? (3 points for under 15 days, 7 points for over 15 days)
- d) Has the child received Managed Move from any school? (5)

- e) Has there been any other involvement with social care or other public agencies? (3)
- f) Is the child home educated? (7)
- g) Has the child been out of school more than two months? (7)
- h) Is the child currently attending a PRS or has the child previously attended a PRS?(7)

Confirmation of the presence of any difficulties ascertained through the admission questions will be investigated by the admissions team to confirm the accuracy of information provided through contact with the previous school.

An email will be sent to the previous school requesting further information to inform a decision about whether the application should be considered under general admission or the IYFA protocol. There will be a requirement on the previous school to respond within 7 working days.

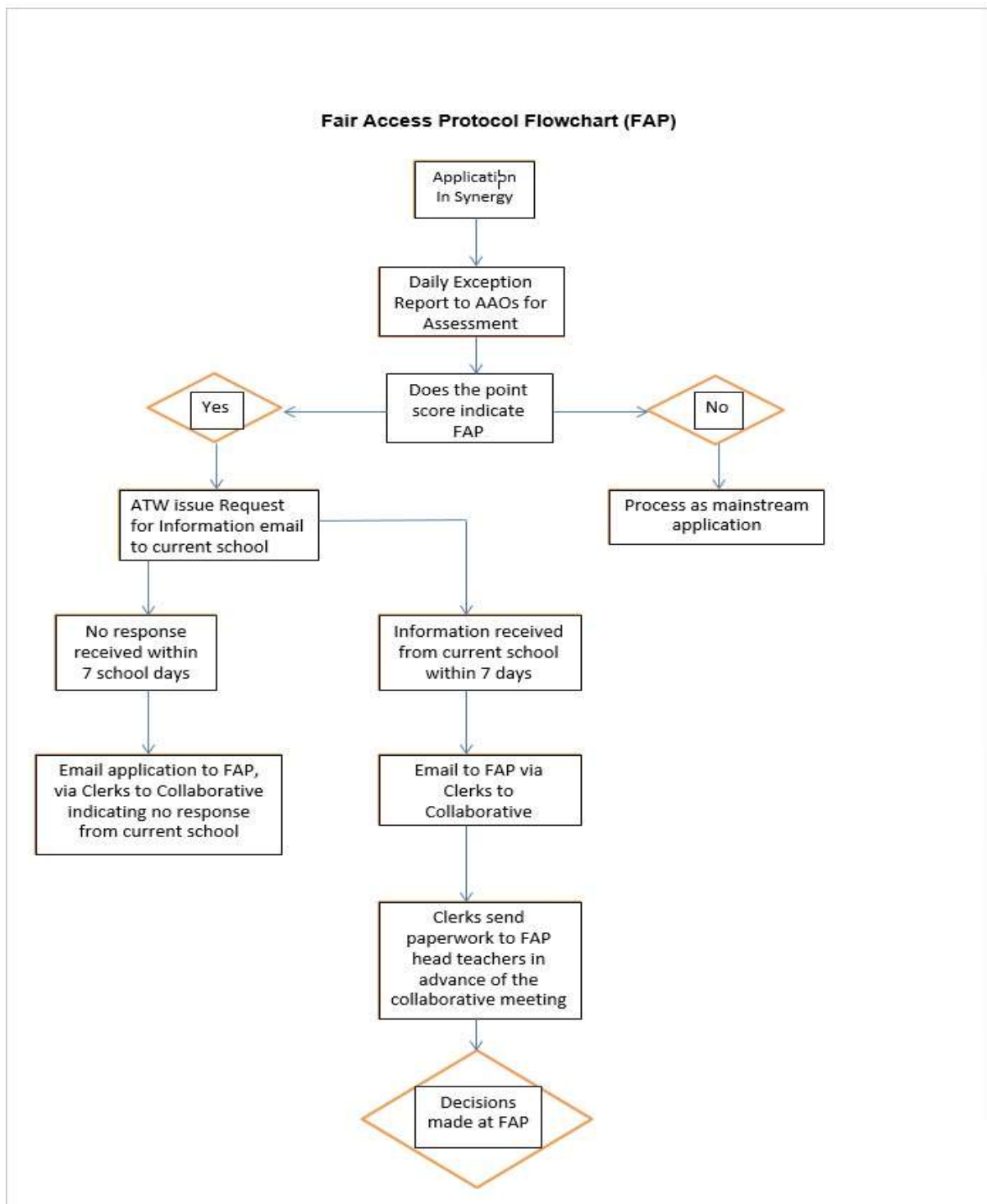
Once confirmation has been received a decision will be made using a point based system. The points allocated for each positive response to the questions above are illustrated by the figures within the brackets. The threshold for applications to be considered by the FAP is 7 points or more.

Admissions will send all supporting evidence to the Collaborative Clerks for the secondary FAP via secure email who will compile the agenda for the FAP and circulate to all members in advance of the meeting. For primary schools this information will be forwarded direct to the schools, within the identified geographical area. This again will be done via secure email.

Applications identified under the protocol will be considered by the Fair Access Panel (FAP) who will decide to offer a place at either the requested or alternative school.

For secondary schools the collaborative clerk will collate a record of decisions and return this to the admissions team within 5 days of the meeting. For primary schools, this record will be made by the Local Authority representative attending the meeting. Following receipt of the record of decision and confirmation that there is no dispute in the decision made the admissions team will allocate to the school indicated and inform parents via letter with a copy also being sent to the allocated school for information.

Appendix 1 – Flow chart

Annex 1





DfE No. 815-	School	Type of Establishment	Published Admission Number 2020/21	Proposed PANs for 2021/2022
2150	Alanbrooke School	Community	15	15
2245	Alne Primary School	Community	21	21
2242	Alverton Primary School	Community	30	30
2246	Amotherby Community Primary School	Community	30	30
2080	Applegarth Primary School	Community	40	40
2247	Appleton Wiske Community Primary School	Community	14	12
2400	Barlby Bridge Community Primary School	Community	27	27
2401	Barlby Community Primary School	Community	48	48
2108	Barrowcliff School	Community	60	60
2390	Barwic Parade Community Primary School, Selby	Community	37	37
2348	Beckwithshaw Community Primary School	Community	14	14
2305	Bentham Community Primary School	Community	30	30
2309	Boroughbridge Primary School	Community	36	36
2310	Bradleys Both Community Primary School	Community	19	19
2250	Brompton and Sawdon Community Primary School	Community	10	10
2249	Brompton Community Primary School	Community	30	30
2225	Broomfield School	Community	37	30
2312	Burton Salmon Community Primary School	Community	8	8
2314	Carlton-in-Snaith Community Primary School	Community	28	28
2212	Catterick Garrison, Carnagill Community Primary School	Community	30	30
2173	Catterick Garrison, Le Cateau Community Primary School	Community	75	75
2189	Catterick Garrison, Wavell Community Infant School	Community	72	72
2224	Cayton Community Primary School	Community	30	30
2167	Colburn Community Primary School	Community	40	40
2316	Cononley Community Primary School	Community	21	21
2317	Cowling Community Primary School	Community	19	19
2347	Darley Community Primary School	Community	14	14
2165	Dishforth Airfield Community Primary School	Community	27	27
2164	Easingwold Community Primary School	Community	45	45
2257	East Ayton Community Primary School	Community	30	30
2320	Fairburn Community Primary School	Community	8	10
2413	Filey Junior School	Community	80	80
2324	Giggleswick Primary School	Community	13	13
2117	Gladstone Road Primary School	Community	120	120
2338	Glasshouses Community Primary School	Community	10	10
2393	Glusburn Community Primary School	Community	50	57
2043	Goathland Primary School	Community	7	7
2327	Great Ouseburn Community Primary School	Community	14	14
2329	Harrogate, Grove Road Community Primary School	Community	40	40
2336	Hellifield Community Primary School	Community	15	15
2236	Helmsley Community Primary School	Community	24	24
2402	Hemingbrough Community Primary School	Community	30	30
2337	Hensall Community Primary School	Community	18	18
2403	Hunmanby Primary School	Community	30	30
2063	Hunton and Arrathorne Community Primary School	Community	10	10
2228	Hutton Rudby Primary School	Community	30	30
2391	Ingleton Primary School	Community	26	26
2321	Kettlewells Felliscliffe Community Primary School	Community	10	10
2343	Kettlewell Primary School	Community	7	7
2064	Kirkbymoorside Community Primary School	Community	30	30
2404	Langton Primary School	Community	15	15
2405	Leavening Community Primary School	Community	10	10
2040	Leeming and Londonderry Community Primary School	Community	8	8

DfE No. 815-	School	Type of Establishment	Published Admission Number 2020/21	Proposed PANs for 2021/2022
2166	Leeming RAF Community Primary School	Community	40	40
2233	Lindhead School	Community	30	30
2171	Linton-on-Ouse Primary School	Community	15	15
2406	Luttons Community Primary School	Community	8	8
2074	Malton Community Primary School	Community	42	42
2163	Mill Hill Community Primary School	Community	30	30
2367	Moorside Primary School	Community	30	30
2075	Nawton Community Primary School	Community	15	15
2081	North and South Cowton Community Primary School	Community	7	7
2407	North Duffield Community Primary School	Community	25	25
2408	Norton Community Primary School	Community	90	90
2060	Oakridge Community Primary School	Community	6	6
2083	Osmotherley Primary School	Community	10	10
2235	Pickering Community Infant School	Community	75	75
2222	Pickering Community Junior School	Community	75	75
2096	Reeth Community Primary School	Community	8	8
2410	Riccall Community Primary School	Community	30	30
2411	Rillington Community Primary School	Community	20	20
2097	Romanby Primary School	Community	40	40
2098	Rosedale Abbey Community Primary School	Community	7	7
2424	Saltergate Community Junior School	Community	60	60
2425	Saltergate Infant School	Community	60	60
2120	Scarborough, Northstead Community Primary School	Community	90	90
2170	Scarborough, Overdale Community Primary School	Community	30	30
2350	Scotton Lingerfield Community Primary School	Community	12	12
2223	Seamer and Irton Community Primary School	Community	60	60
2418	Selby, Longman's Hill Community Primary School	Community	30	30
2421	Sherburn in Elmet, Athelstan Community Primary School	Community	60	60
2186	Sheriff Hutton Primary School	Community	15	15
2354	Sicklinghall Community Primary School	Community	9	12
2221	Sinnington Primary School	Community	12	10
2365	Skipton, Greatwood Community Primary School	Community	30	30
2356	Skipton, Water Street Community Primary School	Community	30	30
2132	Slingsby Community Primary School	Community	11	11
2133	Snape Community Primary School	Community	7	7
2061	Staithe, Seton Community Primary School	Community	15	15
2358	Staveley Community Primary School	Community	10	10
2138	Stillington Primary School	Community	7	7
2335	Summerbridge Community Primary School	Community	12	12
2359	Sutton-in-Craven Community Primary School	Community	30	30
2237	Thirsk Community Primary School	Community	42	42
2360	Thornton in Craven Community Primary School	Community	11	11
2381	Thorpe Willoughby Community Primary School	Community	45	45
2188	Wavell Community Junior School	Community	60	60
2151	Welburn Community Primary School	Community	10	10
2206	Wheatcroft Community Primary School	Community	30	30
2363	Whitley and Eggborough Community Primary School	Community	40	40
2364	Willow Tree Community Primary School	Community	75	75
2430	Woodfield Primary School	Community	30	30
3228	Admiral Long Church of England Primary School	Voluntary controlled	8	8
3001	Aiskew, Leeming Bar Church of England Primary School	Voluntary controlled	14	14
3289	Askrigg Voluntary Controlled Primary School	Voluntary controlled	7	12
3008	Bainbridge Church of England Primary and Nursery School	Voluntary controlled	8	12

DfE No. 815-	School	Type of Establishment	Published Admission Number 2020/21	Proposed PANs for 2021/2022
3223	Barlow Church of England Voluntary Controlled Primary School	Voluntary controlled	12	12
3010	Bedale Church of England Primary School	Voluntary controlled	60	60
3012	Bilsdale Midcable Chop Gate Church of England Voluntary Controlled Primary School	Voluntary controlled	6	6
3226	Birstwith Church of England Primary School	Voluntary controlled	12	12
3227	Bishop Monkton Church of England Primary School	Voluntary controlled	15	15
3231	Brayton Church of England Voluntary Controlled Primary School	Voluntary controlled	60	60
3015	Brompton-on-Swale Church of England Primary School	Voluntary controlled	30	30
3232	Burton Leonard Church of England Primary School	Voluntary controlled	10	10
3233	Chapel Haddlesey Church of England Voluntary Controlled Primary School	Voluntary controlled	10	10
3273	Christ Church Church of England Voluntary Controlled Primary School	Voluntary controlled	20	20
3234	Clapham Church of England Voluntary Controlled Primary School	Voluntary controlled	8	8
3150	Cliffe Voluntary Controlled Primary School	Voluntary controlled	17	17
3235	Cracoe and Rylstone Voluntary Controlled Church of England Primary School	Voluntary controlled	7	7
3020	Crakehall Church of England Primary School	Voluntary controlled	20	20
3021	Crayke Church of England Voluntary Controlled Primary School	Voluntary controlled	13	15
3025	Danby Church of England Voluntary Controlled School	Voluntary controlled	10	10
3027	Dishforth Church of England Voluntary Controlled Primary School	Voluntary controlled	15	15
3236	Embsay Church of England Voluntary Controlled Primary School	Voluntary controlled	30	30
3153	Escrick Church of England Voluntary Controlled Primary School	Voluntary controlled	20	20
3237	Follifoot Church of England Primary School	Voluntary controlled	9	9
3039	Foston Church of England Voluntary Controlled Primary School	Voluntary controlled	4	4
3266	Fountains Church of England Primary School	Voluntary controlled	15	15
3238	Fountains Earth, Lofthouse Church of England Endowed Primary School	Voluntary controlled	6	6
3139	Fylingdales Church of England Voluntary Controlled Primary School	Voluntary controlled	16	16
3285	Gargrave Church of England Voluntary Controlled Primary School	Voluntary controlled	18	18
3040	Gillamoor Church of England Voluntary Controlled Primary School	Voluntary controlled	8	8
3240	Goldsborough Church of England Primary School	Voluntary controlled	12	12
3241	Grassington Church of England Voluntary Controlled Primary School	Voluntary controlled	12	12
3242	Green Hammerton Church of England Primary School	Voluntary controlled	17	17
3243	Grewelthorpe Church of England Primary School	Voluntary controlled	10	10
3207	Gunnerside Methodist Primary School	Voluntary controlled	7	7
3045	Hackforth and Hornby Church of England Primary School	Voluntary controlled	6	6
3046	Hackness Church of England Voluntary Controlled Primary School	Voluntary controlled	10	10
3244	Hambleton Church of England Voluntary Controlled Primary School	Voluntary controlled	25	25
3050	Hawsker Cum Stainsacre Church of England Voluntary Controlled Primary School	Voluntary controlled	12	12
3155	Hertford Vale Church of England Voluntary Controlled Primary School, Staxton	Voluntary controlled	18	18
3053	Hipswell Church of England Primary School	Voluntary controlled	30	30
3284	Holy Trinity CofE Infant School	Voluntary controlled	60	60
3263	Holy Trinity CofE Junior School	Voluntary controlled	60	60
3054	Hovingham Church of England Voluntary Controlled Primary School	Voluntary controlled	8	8
3055	Huby Church of England Voluntary Controlled Primary School	Voluntary controlled	16	16
3057	Hustwaite Church of England Voluntary Controlled Primary School	Voluntary controlled	15	15
3060	Ingleby Greenhow Church of England Voluntary Controlled Primary School	Voluntary controlled	10	10
3076	Kell Bank Church of England Primary School	Voluntary controlled	5	5
3287	Kildwick Church of England Voluntary Controlled Primary School	Voluntary controlled	17	17
3248	Killinghall Church of England Primary School	Voluntary controlled	22	22
3062	Kirby Hill Church of England Primary School	Voluntary controlled	22	22
3252	Kirk Hammerton Church of England Primary School	Voluntary controlled	12	12
3253	Kirk Smeaton Church of England Voluntary Controlled Primary School	Voluntary controlled	15	15
3249	Kirkby Malzeard Church of England Primary School	Voluntary controlled	15	15
3255	Long Marston Church of England Voluntary Controlled Primary School	Voluntary controlled	8	8
3069	Lythe Church of England Voluntary Controlled Primary School	Voluntary controlled	15	15
3256	Markington Church of England Primary & Nursery School	Voluntary controlled	12	12

DfE No. 815-	School	Type of Establishment	Published Admission Number 2020/21	Proposed PANs for 2021/2022
3042	Marwood Church of England Voluntary Controlled Infant School, Great Ayton	Voluntary controlled	21	23
3208	Melsonby Methodist Primary School	Voluntary controlled	10	10
3258	North Stainley Church of England Primary School	Voluntary controlled	8	8
3088	Pickhill Church of England Primary School	Voluntary controlled	9	9
3210	Richmond Methodist Primary School	Voluntary controlled	45	45
3261	Ripley Endowed Church of England School	Voluntary controlled	13	13
3264	Roecliffe Church of England Primary School	Voluntary controlled	14	14
3126	Ruswarp Church of England Voluntary Controlled Primary School	Voluntary controlled	15	15
3099	Sand Hutton Church of England Voluntary Controlled Primary School	Voluntary controlled	11	11
3268	Selby Abbey Church of England Voluntary Controlled Primary School	Voluntary controlled	56	56
3101	Sessay Church of England Voluntary Controlled Primary School	Voluntary controlled	15	15
3270	Settle Church of England Voluntary Controlled Primary School	Voluntary controlled	30	30
3160	Settrington All Saints' Church of England Voluntary Controlled Primary School	Voluntary controlled	9	9
3271	Sharow Church of England Primary School	Voluntary controlled	9	9
3161	Sherburn Church of England Voluntary Controlled Primary School	Voluntary controlled	8	8
3272	Skelton Newby Hall Church of England Primary School	Voluntary controlled	7	7
3274	Skipton Parish Church Church of England Voluntary Controlled Primary School	Voluntary controlled	50	60
3035	Sleights Church of England Voluntary Controlled Primary School	Voluntary controlled	15	15
3108	Snainton Church of England Voluntary Controlled Primary School	Voluntary controlled	10	10
3109	South Kilvington Church of England Voluntary Controlled Primary School	Voluntary controlled	12	12
3110	Spennithorne Church of England Primary School	Voluntary controlled	12	12
3275	Spofforth Church of England Controlled Primary School	Voluntary controlled	15	15
3225	St Cuthbert's Church of England Primary School, Pateley Bridge	Voluntary controlled	17	17
3005	St Hilda's Ampleforth Church of England Voluntary Controlled Primary School	Voluntary controlled	7	7
3124	St Nicholas Church of England Primary School, West Tanfield	Voluntary controlled	10	10
3276	Sutton in Craven Church of England Voluntary Controlled Primary School	Voluntary controlled	15	15
3113	Sutton on the Forest Church of England Voluntary Controlled Primary School	Voluntary controlled	13	15
3117	Thornton Dale CofE (VC) Primary School	Voluntary controlled	26	26
3119	Thornton Watlass Church of England Primary School	Voluntary controlled	7	7
3277	Threshfield School	Voluntary controlled	17	17
3122	Warthill Church of England Voluntary Controlled Primary School	Voluntary controlled	6	6
3163	Weaverthorpe Church of England Voluntary Controlled Primary School	Voluntary controlled	7	7
3016	West Burton Church of England Primary School	Voluntary controlled	7	12
3165	West Heslerton Church of England Voluntary Controlled Primary School	Voluntary controlled	10	10
3282	Wistow Parochial Church of England Voluntary Controlled Primary School	Voluntary controlled	20	20
3130	Wykeham Church of England Voluntary Controlled Primary School	Voluntary controlled	8	8
5200	Nun Monkton Primary Foundation School	Foundation	4	4
3350	Austwick Church of England VA Primary School	Voluntary aided	10	10
3369	Barkston Ash Catholic Primary School	Voluntary aided	20	20
3301	Bolton-on-Swale St Mary's CofE Primary School	Voluntary aided	14	14
3337	Burneston Church of England Voluntary Aided Primary School	Voluntary aided	19	19
3352	Burnsall Voluntary Aided Primary School	Voluntary aided	12	12
3354	Carleton Endowed CofE Primary School	Voluntary aided	20	22
3306	Carlton and Faceby Church of England Voluntary Aided Primary School	Voluntary aided	8	8
3355	Cawood Church of England Voluntary Aided Primary School	Voluntary aided	21	21
3357	Dacre Braithwaite Church of England Primary School	Voluntary aided	10	10
3308	Egton Church of England Voluntary Aided Primary School	Voluntary aided	10	8
3315	Kirkby and Great Broughton Church of England Voluntary Aided Primary School	Voluntary aided	18	18
3360	Kirkby in Malhamdale United Voluntary Aided Primary School	Voluntary aided	12	12
3362	Long Preston Endowed Voluntary Aided Primary School	Voluntary aided	12	12
3319	Masham Church of England VA Primary School	Voluntary aided	20	20
3307	Michael Syddall Church of England Aided Primary School	Voluntary aided	36	36
3320	Middleham Church of England Aided School	Voluntary aided	15	15

DfE No. 815-	School	Type of Establishment	Published Admission Number 2020/21	Proposed PANs for 2021/2022
3262	Ripon Cathedral Church of England Primary School	Voluntary aided	30	30
3602	St Hedda's Roman Catholic Primary School	Voluntary aided	7	7
3620	St Hilda's Roman Catholic Primary School	Voluntary aided	15	15
3376	St Joseph's Catholic Primary School	Voluntary aided	15	15
3610	St Joseph's Roman Catholic Primary School, Pickering	Voluntary aided	15	15
3326	St Martin's Church of England Voluntary Aided Primary School, Scarborough	Voluntary aided	40	40
3373	St Mary's Catholic Primary School	Voluntary aided	30	30
3304	St Peter's Brafferton Church of England Voluntary Aided Primary School	Voluntary aided	13	13
3377	St Robert's Catholic Primary School, Harrogate	Voluntary aided	40	40
3372	St Wilfrid's Catholic Primary School	Voluntary aided	20	20
3331	Terrington Church of England Voluntary Aided Primary School	Voluntary aided	9	9
3351	The Boyle and Petyt Primary School	Voluntary aided	8	8
3000	Ainderby Steeple Church of England Primary School	Academy	20	20
2190	Airy Hill Primary School	Academy	30	30
3361	All Saints Church of England School	Academy	15	15
2014	All Saints Roman Catholic Primary School, Thirsk	Academy	14	14
2301	Appleton Roebuck Primary School	Academy	15	15
2302	Askwith Community Primary School	Academy	15	15
2377	Aspin Park Academy	Academy	60	60
3009	Baldersby St James Church of England Primary School	Academy	8	8
3133	Barton Church of England Primary School	Academy	11	11
2010	Braeburn Primary and Nursery Academy	Academy	70	70
2001	Brotherton and Byram Community Primary Academy	Academy	30	30
2004	Camblesforth Community Primary Academy	Academy	17	17
2013	Cambrai Primary Academy, Catterick Garrison	Academy	30	30
2252	Carlton Miniott Primary Academy	Academy	30	30
2256	Castleton Primary School	Academy	8	8
2383	Coppice Valley Primary School	Academy	30	30
3022	Croft Church of England Primary School	Academy	15	15
3030	East Cowton Church of England Primary School	Academy	8	8
2154	East Whitby Primary Academy	Academy	45	45
3154	Filey Church of England Nursery and Infants Academy	Academy	76	76
3288	Forest of Galtres Anglican/Methodist Primary School	Academy	27	27
2015	Friarage Community Primary School	Academy	60	60
2041	Glaisdale Primary School	Academy	8	8
2047	Great Smeaton Academy Primary School	Academy	10	10
3245	Hampsthwaite Church of England Primary School	Academy	15	20
2328	Harrogate, Bilton Grange Community Primary School	Academy	48	48
2005	Hawes Primary School	Academy	15	15
2368	Hookstone Chase Primary School	Academy	50	50
2012	Keeble Primary Academy, Sowerby	Academy	30	30
2422	Kellington Primary School	Academy	19	19
3251	Kirk Fenton Church of England Primary School	Academy	35	30
3065	Kirkby Fleetham Church of England Primary School	Academy	9	9
3903	Knaresborough St John's CofE Primary School	Academy	50	50
3068	Knayton Church of England Academy	Academy	20	20
2042	Lealholm Primary School	Academy	8	8
2065	Leyburn Primary School	Academy	30	30
2346	Lothersdale Primary School	Academy	15	15
3363	Marton-Cum-Grafton Church of England Voluntary Aided Primary School	Academy	15	15
2389	Meadowside Academy	Academy	30	30
3257	Monk Fryston Church of England Primary School	Academy	30	30
2330	New Park Primary Academy	Academy	40	40

DfE No. 815-	School	Type of Establishment	Published Admission Number 2020/21	Proposed PANs for 2021/2022
2076	Newby and Scalby Primary School	Academy	60	60
3260	North Rigton Church of England Primary School	Academy	15	15
2376	Oatlands Community Junior School	Academy	90	90
2331	Oatlands Infant School	Academy	90	90
2008	Outwood Primary Academy Greystone	Academy	28	30
2372	Pannal Primary School	Academy	60	60
3090	Ravensworth Church of England Primary School	Academy	12	12
3368	Richard Taylor Church of England Primary School	Academy	39	39
2427	Riverside School, Tadcaster	Academy	60	60
2426	Roseberry Academy	Academy	30	30
2382	Rossett Acre Primary School	Academy	60	60
3902	Sacred Heart RC Primary School	Academy	15	15
2009	Saxton Church of England Primary School	Academy	10	10
2351	Selby Community Primary School	Academy	60	60
2380	Sherburn Hungate Primary School	Academy	30	30
2357	South Milford Primary School	Academy	30	30
3291	South Otterington Church of England Primary School	Academy	20	20
2183	Sowerby Primary Academy	Academy	45	45
3600	St Benedict's Roman Catholic Primary School, Ampleforth	Academy	15	15
3631	St George's Roman Catholic Primary School	Academy	15	15
3378	St Joseph's Catholic Primary School, Harrogate, A Voluntary Academy	Academy	30	30
3609	St Mary's Catholic Primary School, Malton	Academy	30	30
3371	St Mary's Primary School Knaresborough, A Voluntary Catholic Academy	Academy	30	30
3614	St Mary's Roman Catholic Primary School, Richmond	Academy	30	30
3247	St Peter's Church of England Primary School	Academy	41	41
3615	St Peter's Roman Catholic Primary School	Academy	30	30
2003	St Stephen's Catholic Primary School and Nursery, A Voluntary Academy	Academy	28	28
2217	Stakesby Primary Academy	Academy	34	30
2011	Starbeck Community Primary School	Academy	50	50
2002	Staynor Hall Primary Academy	Academy	30	30
2139	Stokesley Primary Academy	Academy	58	58
2392	Tadcaster Primary Academy	Academy	28	28
2000	Thomas Hinderwell Primary Academy	Academy	40	30
3278	Tockwith Church of England Primary Academy	Academy	30	30
3120	Topcliffe CofE Academy	Academy	15	15
3034	Trinity Academy Eppleby Forcett	Academy	7	7
3079	Trinity Academy Middleton Tyas	Academy	22	22
2007	Trinity Academy Richmond	Academy	45	45
2197	West Cliff Primary School	Academy	30	30
2333	Western Primary School	Academy	60	60

DfE No. 815-	School	Community, Aided, and Academy Schools	Published Admission Number 2020/2021	Published Admission Number 2020/2021 6th Form	Proposed Admission Limit 2021/222	Proposed Admission Limit 2021/22 6th form where applicable
4052	Bedale High School	Community	187	Not applicable	187	Not applicable
4221	Boroughbridge High School	Community	128	15	128	15
4039	Caedmon College Whitby	Community	184	20	184	20
4041	Eskdale School	Community	110	Not applicable	110	Not applicable
4202	King James's School	Community	267	35	270	35
4054	Lady Lumley's School	Community	184	30	184	30
4077	Malton School	Community	140	20	140	20
4223	Nidderdale High School	Community	85	Not applicable	85	Not applicable
4215	Ripon Grammar School	Community	117 inc 14 boarders	30	117 inc 14 boarders	30
4004	Risedale Sports and Community College	Community	185	Not applicable	185	Not applicable
4022	Ryedale School	Community	140	Not applicable	150	Not applicable
4225	Selby High School Specialist School for the Arts and Science	Community	237	Not applicable	237	Not applicable
4205	Settle College	Community	125	20	115	20
4075	The Wensleydale School & Sixth Form	Community	88	20	88	20
4035	Thirsk School & Sixth Form College	Community	180	10	180	10
4206	Upper Wharfedale School	Community	58	Not applicable	70	Not applicable
4608	Ermysted's Grammar School	Voluntary aided	120	20	120	20
4610	Holy Family Catholic High School, Carlton	Voluntary aided	90	Not applicable	90	Not applicable
4609	St John Fisher Catholic High School	Voluntary aided	210	30	210	30
4232	Barlby High School	Academy	151	Not applicable	151	Not applicable
4003	Brayton Academy	Academy	241	Not applicable	241	Not applicable
4001	EBOR Academy Filey	Academy	112	Not applicable	112	Not applicable
4008	George Pindar School	Academy	187	Not applicable	187	Not applicable
4007	Graham School	Academy	290	Not applicable	290	Not applicable
4200	Harrogate Grammar School	Academy	260	80	260	80
4219	Harrogate High School	Academy	125	15	150	15
4009	Northallerton School & Sixth Form College	Academy	225	65	225	65
4152	Norton College	Academy	160	120	160	120
4006	Outwood Academy Easingwold	Academy	210	75	210	75
4203	Outwood Academy Ripon	Academy	131	0	150	Not applicable
4076	Richmond School	Academy	250	80	250	80
4217	Rossett School	Academy	235	15	250	15
4073	Scalby School	Academy	192	Not applicable	192	Not applicable
4216	Sherburn High School	Academy	197	0	170	Not applicable
4518	Skipton Girls' High School	Academy	116	35	116	35
4210	South Craven School	Academy	270	42	270	42
4611	St Aidan's Church of England High School	Academy	250	100	250	100
4604	St Augustine's Roman Catholic School, Scarborough	Academy	96	Not applicable	96	Not applicable
4605	St Francis Xavier School	Academy	90	Not applicable	90	Not applicable
4047	Stokesley School	Academy	189	20	189	20
4211	Tadcaster Grammar School	Academy	262	10	262	10
4000	The Skipton Academy	Academy	167	Not applicable	167	Not applicable
4002	Scarborough University Technical College	Free School	150	150	150	150



NORTH YORKSHIRE COUNTY COUNCIL

CHILDREN AND YOUNG PEOPLE'S SERVICE

### **Consultation**

**18 October 2019 – 6 December 2019**

### **Proposed changes to school catchment areas**

### **Admiral Long CE (Voluntary Controlled) Primary School, Burnt Yates and Ripley Endowed Church of England (Voluntary Controlled) Primary School**

North Yorkshire County Council is consulting on a proposal to change the catchment areas for Admiral Long CE (Voluntary Controlled) Primary School and Ripley Endowed Church of England (Voluntary Controlled) Primary School. This consultation is part of the admission arrangements consultation for 2021/22 and will run from 18 October 2019 to 6 December 2019.

We would welcome your views on the proposal.

#### **Why are we proposing a change?**

On the closure of Burnt Yates CE VA Primary School in August 2018, the school's catchment area became a joint catchment area served by Bishop Thornton CE Primary School and Ripley Endowed Church of England Primary School. This joint catchment area includes the villages of Burnt Yates, Clint and Bedlam.

Bishop Thornton CE Primary School transferred site to the former premises of Burnt Yates School from 1 September 2019. This followed consultation and statutory proposals published by the Governing Body of Bishop Thornton CE Primary School which were approved by the County Council's Executive Member for Education and Skills on 25 June 2019. The school is now known as Admiral Long CE Primary School.

Now that the school has relocated from Bishop Thornton to Burnt Yates it seems an appropriate time to review the suitability of the current joint catchment area.

We propose to create separate catchment areas for Admiral Long CE Primary School and Ripley Endowed Church of England Primary School. The boundary between the two catchment areas will be redrawn to provide a more equitable division between the two schools.

#### **Which school catchment areas would be affected by the proposal?**

Only the school catchment areas for Admiral Long CE (Voluntary Controlled) Primary School and Ripley Endowed Church of England (Voluntary Controlled) Primary School would be affected by the proposal.



## **What changes are proposed?**

We propose to create separate catchment areas for Admiral Long CE Primary School and Ripley Endowed Church of England Primary School. There will no longer be a joint catchment area for the two schools.

The boundary between the catchment areas for Admiral Long and Ripley schools will be redrawn to provide a more equitable division between the two schools. This will result in the following changes:

- The villages of Burnt Yates and Clint will become part of the catchment area for Admiral Long CE Primary School.
- The village of Bedlam will become part of the catchment area for Ripley Endowed Church of England Primary School.

Other parts of the existing catchment areas for Admiral Long and Ripley schools will remain unchanged:

- The villages of Bishop Thornton and Shaw Mills will remain within the catchment area for Admiral Long CE Primary School.
- The villages of Ripley and South Stainley will remain within the catchment area for Ripley Endowed Church of England Primary School.

Maps showing the current and proposed catchment areas are included below.

## **How many children live in the current catchment areas and are there plans for additional housing?**

As at September 2018, there were 39 primary-aged children living in the current joint catchment area, 21 living in the current Ripley catchment area, and 26 living in the current Admiral Long (Bishop Thornton) catchment area. In each area, children attend a range of different schools.

There are outstanding planning permissions for 31 houses in the current joint catchment area, for 19 houses in the current Ripley catchment area, and for 12 houses in in the current Admiral Long (Bishop Thornton) catchment area. On average, every 4 houses generates one primary-aged pupil.

## **When would any change become effective?**

This review is part of the normal admission arrangements consultation which takes place annually. In line with the statutory requirements any approved changes would become effective for school admissions in September 2021.

Transport to schools will be provided in accordance with the Local Authority's home to school transport policy. Full details are available at <https://www.northyorks.gov.uk/school-transport-reception-year-11-children>

**What happens next?**

**We would welcome your responses by the closing date of 6 December 2019.**

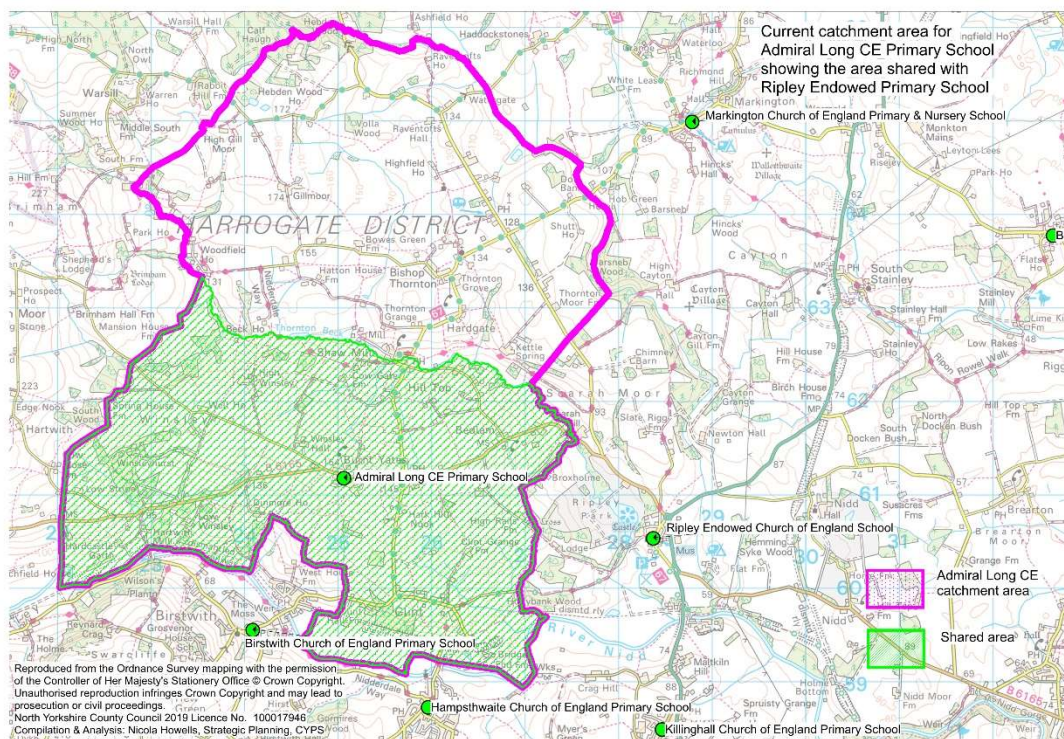
**Responses can be made by email to [nicola.howells@northyorks.gov.uk](mailto:nicola.howells@northyorks.gov.uk)**

Alternatively, responses may be sent to:

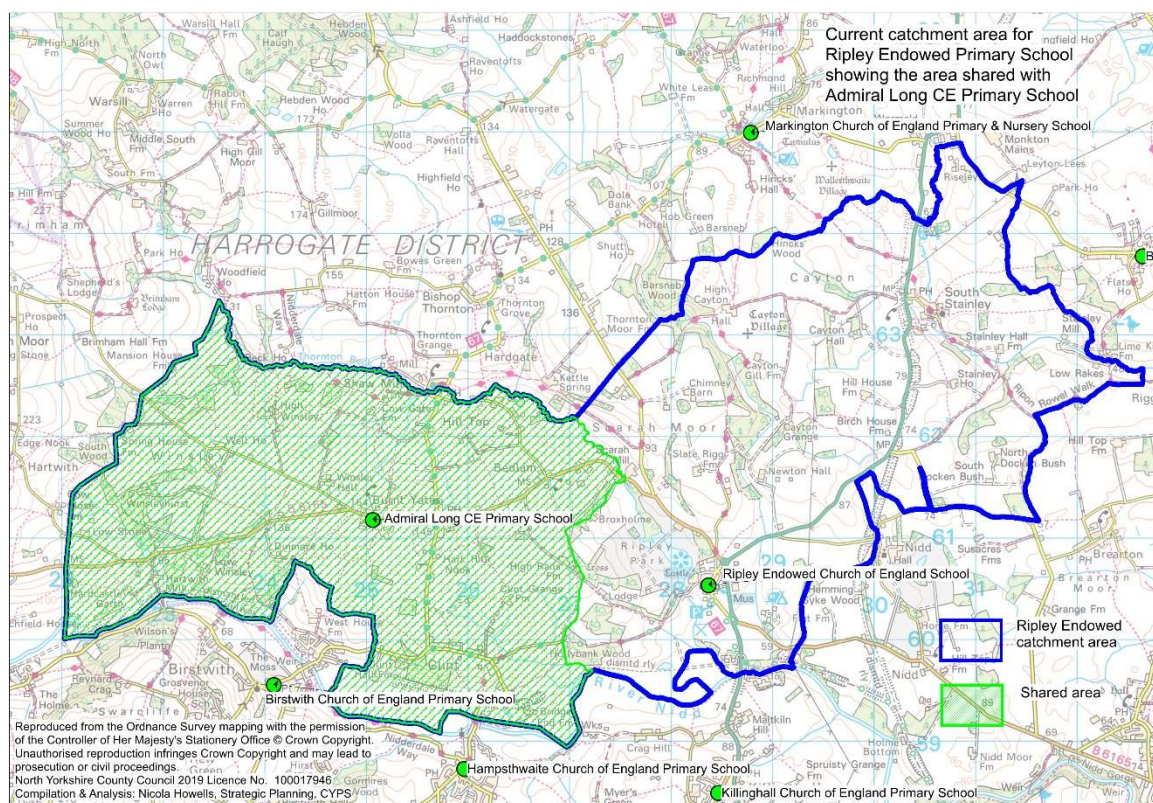
Freepost RTKE-RKAY-CUJS, Nicola Howells, Strategic Planning, Children & Young People's Service, North Yorkshire County Council, County Hall, NORTHALLERTON, DL7 8AE

Consultation responses will then be considered by the County Council's Executive on 28 January 2020 with a final decision taken by the County Council on 19 February 2020 as part of the normal annual admission arrangements process.

**Current catchment area for Admiral Long CE Primary School showing the area shared with Ripley Endowed Church of England Primary School**




**Current catchment area for Ripley Endowed Church of England Primary School showing the area shared with Admiral Long CE Primary School**

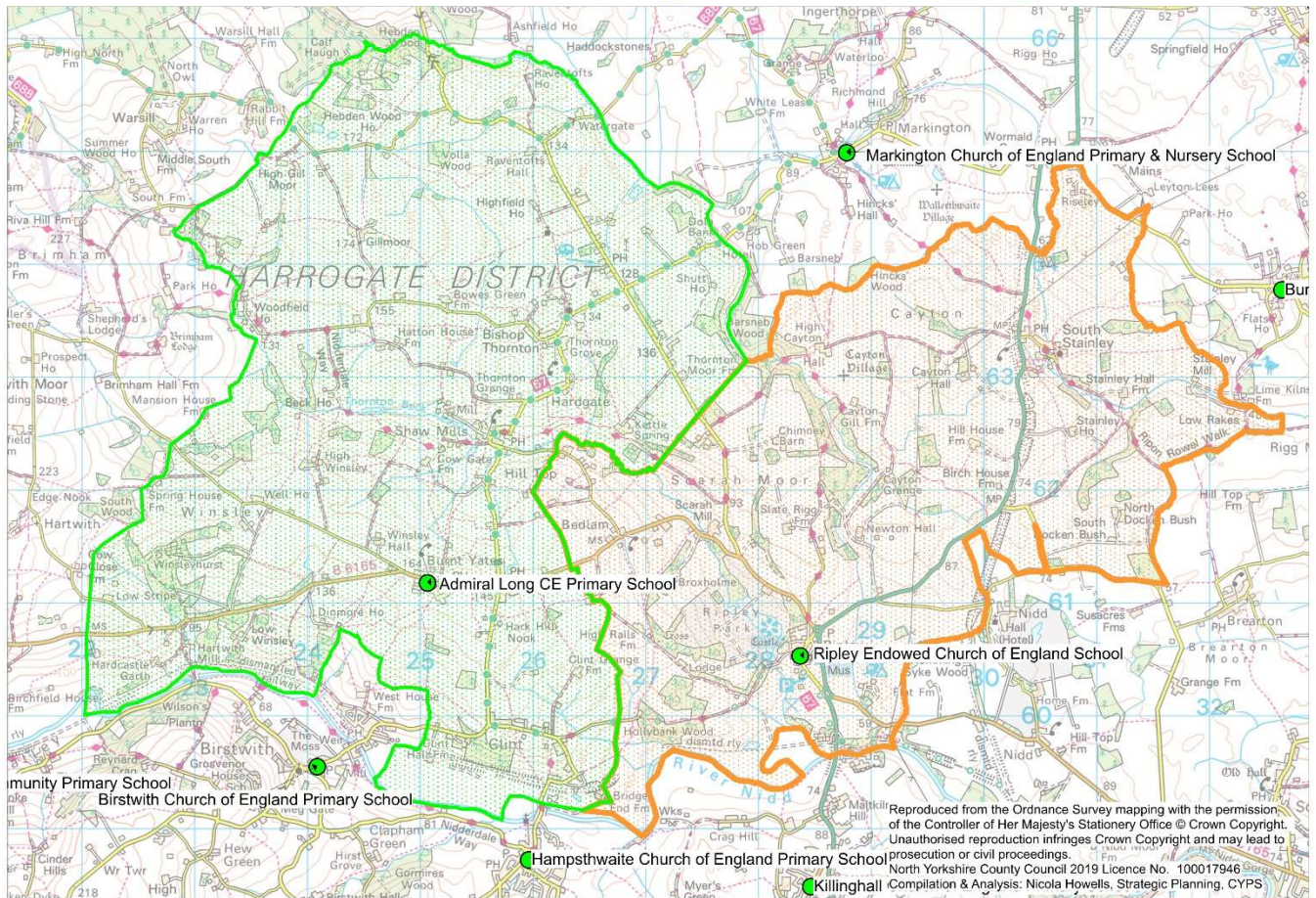


# Proposed catchment areas for Admiral Long CE Primary School and Ripley Endowed Church of England Primary School

Proposed catchment areas for Admiral Long CE Primary School and Ripley Endowed CE Primary School

 Admiral Long CE Primary School area

 Ripley Endowed CE Primary area





NORTH YORKSHIRE COUNTY COUNCIL  
CHILDREN AND YOUNG PEOPLE'S SERVICE

**Consultation**

**18 October 2019 – 6 December 2019**

**Proposed changes to school catchment areas**

**Malton School**

North Yorkshire County Council is consulting on a proposal to change the catchment area for Malton School. This consultation is part of the admission arrangements consultation for 2021/22 and will run from 18 October 2019 to 6 December 2019.

We would welcome your views on the proposal.

**Why are we proposing a change?**

Following recent discussions, it was identified that there are a number of North Yorkshire pupils that currently live in an area which is not served by a North Yorkshire school with an identifiable catchment area. It is essential that all North Yorkshire parents should have the ability to preference a North Yorkshire school. To eliminate any potential issues for North Yorkshire parents who currently live in the following parishes Barton-le-Willows, Flaxton, Harton, Claxton, Buttercrambe with Bossall, Sand Hutton, Warthill, Upper Helmsley and Gate Helmsley it is proposed that by extending the current Malton School catchment area it will address this anomaly.

Parents within this area will still be able to preference a current York School and within this proposal parents will be able to preference both Malton School as their catchment School and Huntington School as their joint catchment school.

**Which school catchment areas would be affected by the proposal?**

Only the school catchment area for Malton School would be affected by the proposal.

## **What changes are proposed?**

There will be a joint catchment area for the two schools serving the North Yorkshire parishes of

- Barton-le-Willows – currently served by both school areas
- Flaxton
- Harton
- Claxton
- Buttercrambe with Bossall
- Sand Hutton
- Warthill
- Upper Helmsley
- Gate Helmsley

Maps showing the current and proposed catchment areas are included below.

## **When would any change become effective?**

This review is part of the normal admission arrangements consultation which takes place annually. In line with the statutory requirements any approved changes would become effective for school admissions in September 2021.

Transport to schools will be provided in accordance with the Local Authority's home to school transport policy. Full details are available at <https://www.northyorks.gov.uk/school-transport-reception-year-11-children>

## **What happens next?**

**We would welcome your responses by the closing date of 6 December 2019.**

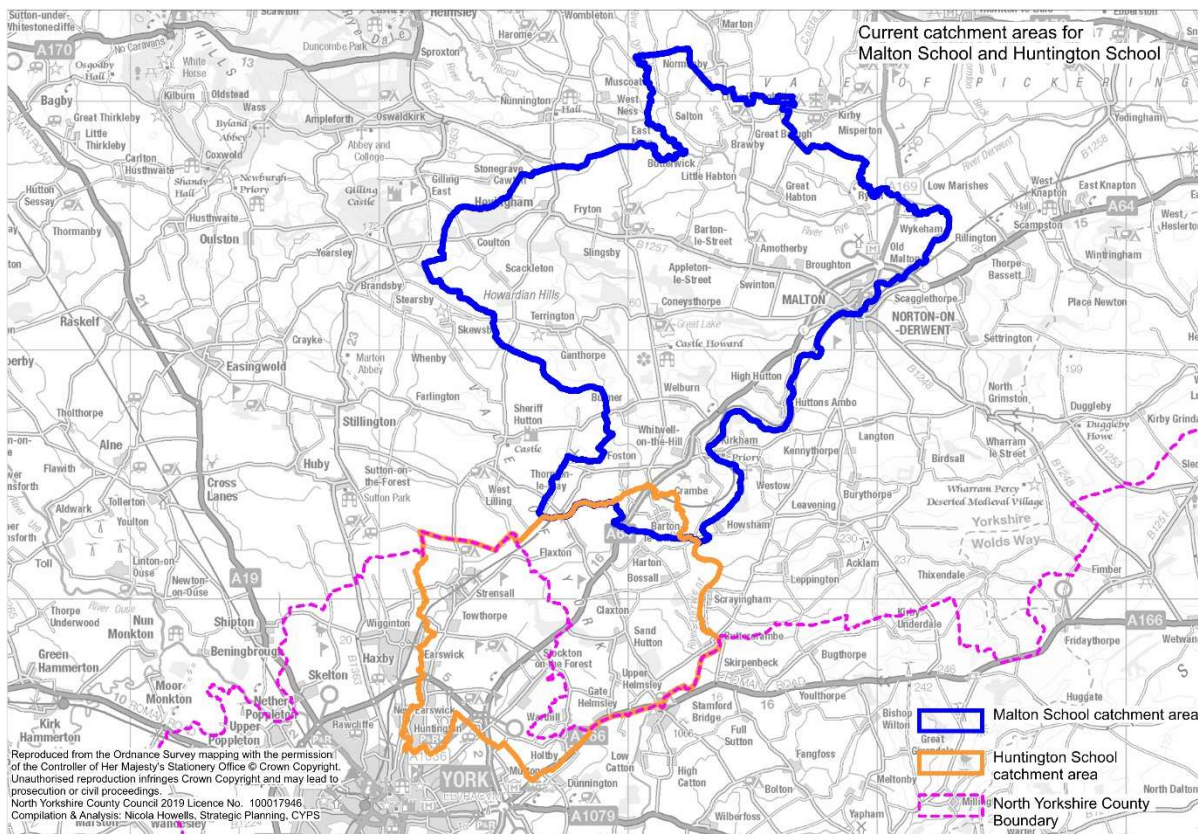
**Responses can be made by email to [nicola.howells@northyorks.gov.uk](mailto:nicola.howells@northyorks.gov.uk)**

Alternatively responses may be sent to:

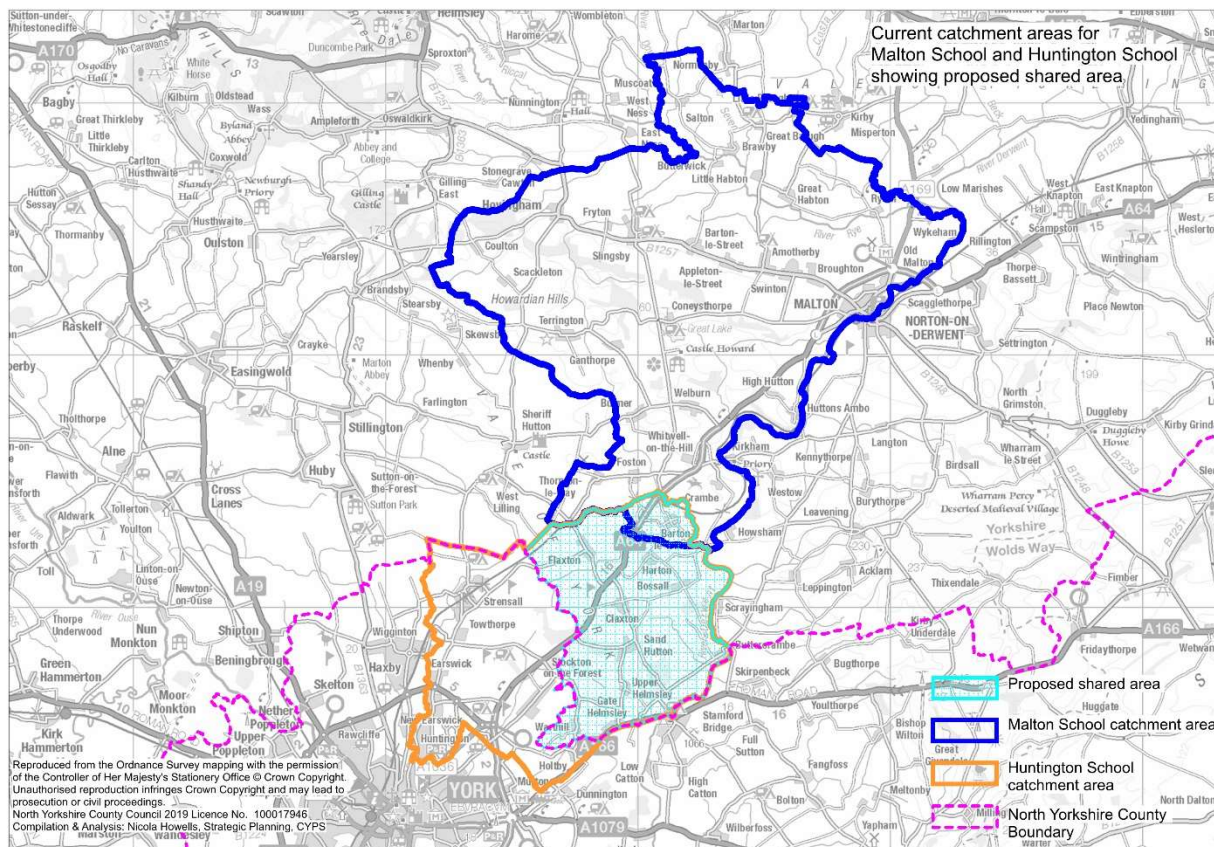
Freeport RTKE-RKAY-CUJS, Nicola Howells, Strategic Planning, Children & Young People's Service, North Yorkshire County Council, County Hall, NORTHALLERTON, DL7 8AE

Consultation responses will then be considered by the County Council's Executive on 28 January 2020 with a final decision taken by the County Council on 19 February 2020 as part of the normal annual admission arrangements process.

Current catchment areas for Malton School and Huntington School



Proposed catchment areas for Malton School and Huntington School



This page is left intentionally blank